

# TECHBOOK 2016

**DT** SWISS



# DT SWISS CONTENT

---

SUSPENSION 05 – 09	Forks	06 – 07
	Shocks	08 – 09

---

WHEELS 11 – 37	Wheels MTB	12 – 31
	Wheels Road	32 – 37

---

COMPONENTS 39 – 51	Rims MTB	40 – 41
	Rims Road	42
	Hubs	43 – 48
	RWS	49
	Spokes	50
	Nipples	51

---

ACCESSORIES 53 – 59	Rotor kits	54 – 55
	Tubeless solution	56 – 57
	Tire pressure / Tire dimension	58
	Proline	59

---

DT SWISS 60 – 63	Glossary	60
	Riding styles	61
	Impressum	62

---



# TECHBOOK 2016





# SUSPENSION

---



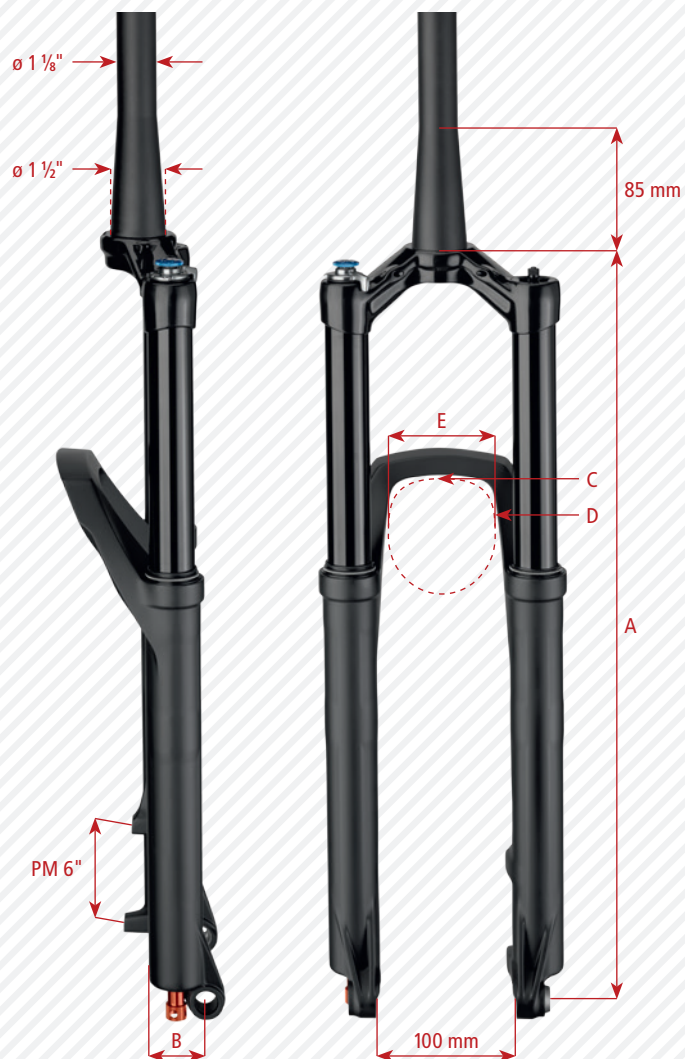
FORKS || SHOCKS

# SUSPENSION FORKS

Model	Travel	Dropout	Fork slider		Spring	Damping		Remote		Diameter		Crown		Steerer		Accessories included					
			Color	Material		O.L	O.D.L	Yes	No	Stanchions	Steerer		A = aluminum black	C = carbon	A = aluminum black	C = carbon	Carbon expander	Steerer star nut set	Shock pump	RWS 15 / 100 mm Thru axle light	Two In One remote lever
											Weight ± 3% [g] incl. RWS	100 mm									
<b>O.D.L (Open – Drive – Lock) technology</b>																					
100 27.5 OPM	1585	●			●	●	●	●	○	●	●	●	●		●	●	●	●	●	●	
<b>NEW</b> 100 27.5 OPM Race	1455	●			●	●	●	●	○	●	●	●	●		●	●	●	●	●	●	
<b>NEW</b> 100 27.5 OPM LTD	1455	●			●	●	●	●	○	●	●	●	●		●	●	●	●	●	●	
120 27.5 OPM	1590		●		●	●	●	●	○	●	●	●	●		●	●	●	●	●	●	
<b>NEW</b> 120 27.5 OPM Race	1460		●		●	●	●	●	○	●	●	●	●		●	●	●	●	●	●	
<b>NEW</b> 120 27.5 OPM LTD	1460		●		●	●	●	●	○	●	●	●	●		●	●	●	●	●	●	
150 27.5 OPM	1630			●	●	●	●	●	○	●	●	●	●		●	●	●	●	●	●	
100 29 OPM	1615	●			●	●	●	●	○	●	●	●	●		●	●	●	●	●	●	
<b>NEW</b> 100 29 OPM Race	1485	●			●	●	●	●	○	●	●	●	●		●	●	●	●	●	●	
<b>NEW</b> 100 29 OPM LTD	1485	●			●	●	●	●	○	●	●	●	●		●	●	●	●	●	●	
120 29 OPM	1670		●		●	●	●	●	○	●	●	●	●		●	●	●	●	●	●	
<b>NEW</b> 120 29 OPM Race	1540		●		●	●	●	●	○	●	●	●	●		●	●	●	●	●	●	
<b>NEW</b> 120 29 OPM LTD	1540		●		●	●	●	●	○	●	●	●	●		●	●	●	●	●	●	
130 29 OPM	1690			●	●	●	●	●	○	●	●	●	●		●	●	●	●	●	●	
<b>O.L (Open – Lock) technology</b>																					
100 27.5 OPM	1585	●			●	●	●	●	○	●	●	●	●		●	●	●	●	●	●	
120 27.5 OPM	1590		●		●	●	●	●	○	●	●	●	●		●	●	●	●	●	●	
150 27.5 OPM	1630			●	●	●	●	●	○	●	●	●	●		●	●	●	●	●	●	
100 29 OPM	1615	●			●	●	●	●	○	●	●	●	●		●	●	●	●	●	●	
120 29 OPM	1670		●		●	●	●	●	○	●	●	●	●		●	●	●	●	●	●	
130 29 OPM	1690			●	●	●	●	●	○	●	●	●	●		●	●	●	●	●	●	

● = Standard ○ = Option

# SUSPENSION FORKS



Model	Technical data									
	Product name	Hose guide	Ride height (A) ± 3 mm [mm]	Fork offset (B) [mm]	Tire diameter max. (C) [mm]	Max. diameter (D) at tire width (E) [mm]	Max. tire width (E) [mm]	Intended use / riding styles	Recommended system weight max. [kg]	Disc mount
<b>O.D.L (Open – Drive – Lock) technology</b>										
100 27.5 OPM	●	488	41	718	698	65	X	130	PM 6" max. 210 mm	
<b>NEW</b> 100 27.5 OPM Race	●	488	41	718	698	65	XR	110	PM 6" max. 210 mm	
<b>NEW</b> 100 27.5 OPM LTD	●	488	41	718	698	65	XR	110	PM 6" max. 210 mm	
120 27.5 OPM	●	508	41	718	698	65	X	130	PM 6" max. 210 mm	
<b>NEW</b> 120 27.5 OPM Race	●	508	41	718	698	65	XR	110	PM 6" max. 210 mm	
<b>NEW</b> 120 27.5 OPM LTD	●	508	41	718	698	65	XR	110	PM 6" max. 210 mm	
150 27.5 OPM	●	538	41	718	698	65	XM	130	PM 6" max. 210 mm	
100 29 OPM	●	505	45	756	733	62	X	130	PM 6" max. 210 mm	
<b>NEW</b> 100 29 OPM Race	●	505	45	756	733	62	XR	110	PM 6" max. 210 mm	
<b>NEW</b> 100 29 OPM LTD	●	505	45	756	733	62	XR	110	PM 6" max. 210 mm	
120 29 OPM	●	525	45	756	733	62	X	130	PM 6" max. 210 mm	
<b>NEW</b> 120 29 OPM Race	●	525	45	756	733	62	XR	110	PM 6" max. 210 mm	
<b>NEW</b> 120 29 OPM LTD	●	525	45	756	733	62	XR	110	PM 6" max. 210 mm	
130 29 OPM	●	535	45	756	733	62	X / XM	130	PM 6" max. 210 mm	
<b>O.L (Open – Lock) technology</b>										
100 27.5 OPM	●	488	41	718	698	65	X	130	PM 6" max. 210 mm	
120 27.5 OPM	●	508	41	718	698	65	X	130	PM 6" max. 210 mm	
150 27.5 OPM	●	538	41	718	698	65	XM	130	PM 6" max. 210 mm	
100 29 OPM	●	505	45	756	733	62	X	130	PM 6" max. 210 mm	
120 29 OPM	●	525	45	756	733	62	X	130	PM 6" max. 210 mm	
130 29 OPM	●	535	45	756	733	62	X / XM	130	PM 6" max. 210 mm	

● = Standard

# SUSPENSION SHOCKS

Model	Technical data	Air chamber, finish		Spring system		Damping		Remote		Mounting system	Accessories included							
		Product name	Weight ± 3% [g] <sup>1)</sup>	165 (A) x 38 (D) mm	190 (A) x 50 (D) mm	200 (A) x 50 (D) mm	200 (A) x 55 (D) mm	Intended use / riding styles	Carbon fiber	Aluminum black	ABS	SAB	Rebound, O.D.L	Rebound, O.L	Yes	No	Ball joint	Lightweight remote lever
<b>O.D.L (Open – Drive – Lock) technology</b>																		
<b>X 313 Carbon</b>	145	●	●	●	●	XR	●		●		●			●		●		
<b>X 313 Carbon remote</b>	165 <sup>2)</sup>	●	●	●	●	XR	●		●		●			●		●		●
<b>X 313</b>	185	●	●	●	●	X / XM		●	●		●			●		●		
<b>X 313 remote</b>	205 <sup>2)</sup>	●	●	●	●	X / XM		●	●		●			●		●		●
<b>O.L (Open – Lock) technology</b>																		
<b>M 212</b>	185	●	●	●	●	X / XM		●	●		●			●		●		
<b>M 212 remote</b>	205 <sup>2)</sup>	●	●	●	●	X / XM		●	●		●			●		●		●

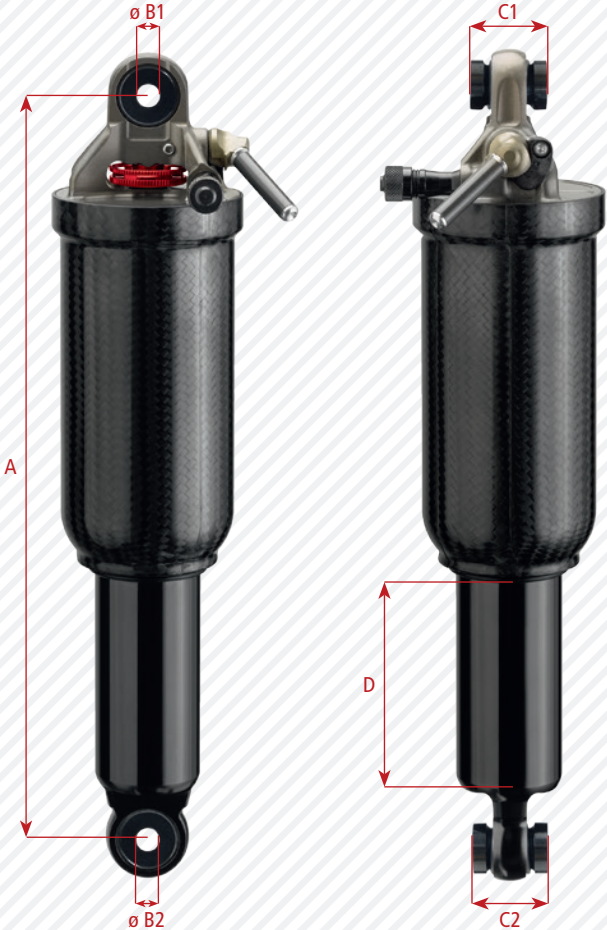
● = Standard

○ = Option

<sup>1)</sup> Weight at 165 x 38 mm

<sup>2)</sup> Incl. Lightweight single stage lever





A = Eye-to-eye [mm]  
D = Travel [mm]  
B1/B2 = Bolt diameter [mm]  
C1/C2 = Mounting hardware width [mm]

Lever version



Remote version



For a complete list of available DT Swiss mounting hardware kits, check [www.dtswiss.com/accessories](http://www.dtswiss.com/accessories) or contact your national DT Swiss distributor.





WHEELS

MTB || ROAD

# WHEELS MTB

SUSPENSION  
WHEELS  
COMPONENTS  
ACCESSORIES  
DT SWISS

Model			Rim								Hub																	
Product name	Weight ± 5% [g]	Built-in width [mm]	Rim dimension	Rim inner width [mm]	Rim outer width [mm]	Rim height [mm]	Clincher tubeless ready	Clincher	Valve hole Presta SV / ø 6.5 mm	Valve hole Schrader AV ø 8.5 mm	Material		Hub axle system								Free wheel		Free wheel body		Disc mount			
											Carbon	Aluminum	5 / 100 mm RWS / Quick release	15 / 100 mm Thru axle	15 / 110 mm Thru axle PS <sup>1)</sup>	15 / 110 mm Thru axle Boost	15 / 150 mm Thru axle	20 / 110 mm Thru axle	5 / 135 mm RWS / Quick release	12 / 142 mm Thru axle	12 / 148 mm Thru axle Boost	12 / 150 mm Thru axle	12 / 190 mm Thru axle	12 / 197 mm Thru axle	DT Swiss Ratchet System	Pawl system	Shimano MTB 9 / 10 / 11 and Sram MTB 9 / 10	Sram MTB XD 11
<b>XRC / XR SPLINE® wheels</b>																												
<b>NEW XRC 1200 SPLINE® 27.5</b>	615	100	584 x 21.5	21.5	28	20	●	●	●	○	●														●	○		
	715	110	584 x 21.5	21.5	28	20	●	●	●			●														●		
	620	110	584 x 21.5	21.5	28	20	●	●	●					●											●	○		
	725	142	584 x 21.5	21.5	28	20	●	●	●							○	●							●*	●	○	●	○
	730	148	584 x 21.5	21.5	28	20	●	●	●									●						●*	●	○	●	○
<b>NEW XRC 1200 SPLINE® 29</b>	655	100	622 x 21.5	21.5	28	20	●	●	●	○	●														●	○		
	755	110	622 x 21.5	21.5	28	20	●	●	●				●													●		
	660	110	622 x 21.5	21.5	28	20	●	●	●					●											●	○		
	790	142	622 x 21.5	21.5	28	20	●	●	●							○	●							●*	●	○	●	○
	795	148	622 x 21.5	21.5	28	20	●	●	●									●						●*	●	○	●	○
<b>XR 1501 SPLINE® ONE 26</b>	655	100	559 x 20	20	24	18	●	●			●	○	●													●		
	755	142	559 x 20	20	24	18	●	●			●						○	●						●*	●	○	●	
	745	142	559 x 20	20	24	18	●	●			●							○	●					●*	○	●	●	
<b>XR 1501 SPLINE® ONE 27.5</b>	680	100	584 x 20	20	24	18	●	●			●	○	●													●		
	<b>NEW</b> 740	110	584 x 20	20	24	18	●	●			●		●													●		
	790	142	584 x 20	20	24	18	●	●			●							○	●					●*	●	○	●	
	780	142	584 x 20	20	24	18	●	●			●								○	●				●*	○	●	●	
<b>XR 1501 SPLINE® ONE 29</b>	710	100	622 x 20	20	24	18	●	●			●	○	●													●		
	780	110	622 x 20	20	24	18	●	●			●		●													●		
	810	142	622 x 20	20	24	18	●	●			●								○	●				●*	●	○	●	
	800	142	622 x 20	20	24	18	●	●			●									○	●			●*	○	●	●	

● = Standard

○ = Convertible with included accessories

○ = Option

<sup>1)</sup> Predictive Steering for RS-1

\* 36 teeth SL

Nipples		Spokes					Technical data					Accessories included												
Nipple type		No. of spokes	Spoke type		Length		Lacing	Intended use / riding styles	Axle clamping force (min./max.) 4000N / 8000N	Recommended system weight max. [kg]	RWS ratchet wheel mounting system <sup>2)</sup>	Quick release wheel mounting system	5 / 100 mm end caps / axle	15 / 100 mm end caps	5 / 135 mm end caps	12 / 190 mm end caps	12 mm Sram MTB XD 11 kit	Tubeless ready tape	Tubeless valve	Valve adapter Schrader AV to Presta SV	Rim tape	Wheel bag	Centering tool	Center Lock / IS (6-bolt) adapter
DT Pro Lock® aluminum	DT Pro Lock® brass		Left	Right	Left [mm]	Right [mm]																		
●		24	DT aero comp®	DT aero comp®	280	281	2-cross	XR	●	100								●				●	●	●
●		24	DT aero comp®	DT aero comp®	280	281	2-cross	XR	●	100								●				●	●	
●		24	DT aero comp®	DT aero comp®	281	282	2-cross	XR	●	100								●				●	●	●
●		24	DT aero comp®	DT aero comp®	281	279	2-cross	XR	●	100							●	●	●			●	●	●
●		24	DT aero comp®	DT aero comp®	282	280	2-cross	XR	●	100							●	●	●			●	●	●
●		28	DT aero comp®	DT aerolite®	305	306	3-cross	XR	●	100								●				●	●	●
●		28	DT aero comp®	DT aerolite®	305	305	3-cross	XR	●	100								●				●	●	●
●		28	DT aero comp®	DT aerolite®	305	305	3-cross	XR	●	100								●				●	●	●
●		28	DT aero comp®	DT aero comp®	306	305	3-cross	XR	●	100							●	●	●			●	●	●
●		28	DT aero comp®	DT aero comp®	305	305	3-cross	XR	●	100							●	●	●			●	●	●
●		28	DT competition®	DT competition®	275	273	3-cross	XR	●	100	●	●						●						
●		28	DT competition®	DT competition®	275	274	3-cross	XR	●	100	●				●			●	●					
●		28	DT competition®	DT competition®	275	274	3-cross	XR	●	100	●				●			●	●					
●		28	DT competition®	DT competition®	287	288	3-cross	XR	●	100	●	●						●						
●		28	DT competition®	DT competition®	286	287	3-cross	XR	●	100								●						
●		28	DT competition®	DT competition®	288	287	3-cross	XR	●	100	●				●			●	●					
●		28	DT competition®	DT competition®	288	287	3-cross	XR	●	100	●				●			●	●					
●		28	DT competition®	DT competition®	305	306	3-cross	XR	●	100	●	●						●						
●		28	DT competition®	DT competition®	305	306	3-cross	XR	●	100								●						
●		28	DT competition®	DT competition®	307	305	3-cross	XR	●	100	●				●			●	●					
●		28	DT competition®	DT competition®	307	305	3-cross	XR	●	100	●				●			●	●					

● = Standard

<sup>2)</sup> For Quick release and Thru bolt, no Thru axle

# WHEELS MTB

Model			Rim										Hub																
Product name	Weight ± 5% [g]	Built-in width [mm]	Rim dimension	Rim inner width [mm]	Rim outer width [mm]	Rim height [mm]	Clincher tubeless ready	Clincher	Valve hole Presta SV ø 6.5 mm	Valve hole Schrader AV ø 8.5 mm	Material		Hub axle system								Free wheel		Free wheel body		Disc mount				
											Carbon	Aluminum	5 / 100 mm RWS / Quick release	15 / 100 mm Thru axle	15 / 110 mm Thru axle PS <sup>1)</sup>	15 / 110 mm Thru axle Boost	15 / 150 mm Thru axle	20 / 110 mm Thru axle	5 / 135 mm RWS / Quick release	12 / 142 mm Thru axle	12 / 148 mm Thru axle Boost	12 / 150 mm Thru axle	12 / 190 mm Thru axle	12 / 197 mm Thru axle	DT Swiss Ratchet System	Pawl system	Shimano MTB 9 / 10 / 11 and Sram MTB 9 / 10	Sram MTB XD 11	Center Lock
<b>X SPLINE® wheels</b>																													
<b>X 1700 SPLINE® TWO 27.5</b>	745	100	584 x 20	20	24	18	●	●			●	●													●	○			
	<b>NEW</b>	845	110	584 x 20	20	24	18	●	●		●		●													●			
	<b>NEW</b>	755	110	584 x 20	20	24	18	●	●					●											●	○			
		875	142	584 x 20	20	24	18	●	●			●										●		○	●	○			
		865	142	584 x 20	20	24	18	●	●			●										●		○	●	●	○		
		<b>NEW</b>	880	148	584 x 20	20	24	18	●	●		●										●		●	○	●	○		
	<b>NEW</b>	870	148	584 x 20	20	24	18	●	●		●										●		○	●	●	○			
<b>X 1700 SPLINE® TWO 29</b>		780	100	622 x 20	20	24	18	●	●		●	●														●	○		
	<b>NEW</b>	875	110	622 x 20	20	24	18	●	●		●		●														●		
	<b>NEW</b>	790	110	622 x 20	20	24	18	●	●		●			●												●	○		
		910	142	622 x 20	20	24	18	●	●		●											●		○	●	○			
		900	142	622 x 20	20	24	18	●	●		●											●		○	●	●	○		
		<b>NEW</b>	915	148	622 x 20	20	24	18	●	●		●										●		●	○	●	○		
		<b>NEW</b>	905	148	622 x 20	20	24	18	●	●		●										●		○	●	●	○		

● = Standard

○ = Convertible with included accessories

○ = Option

<sup>1)</sup> Predictive Steering for RS-1

	Nipples		Spokes				Technical data					Accessories included													
	Nipple type		No. of spokes	Spoke type		Length		Lacing	Intended use / riding styles	Axle clamping force (min./max.) 4000N / 8000N	Recommended system weight max. [kg]	RWS ratchet wheel mounting system <sup>2)</sup>	Quick release wheel mounting system	5 / 100 mm end caps / axle	15 / 100 mm end caps	5 / 135 mm end caps	12 / 190 mm end caps	12 mm Sram MTB XD 11 kit	Tubeless ready tape	Tubeless valve	Valve adapter Schrader AV to Presta SV	Rim tape	Wheel bag	Centering tool	Center Lock / IS (6-bolt) adapter
	DT Pro Lock® aluminum	DT Pro Lock® brass		Left	Right	Left [mm]	Right [mm]																		
●			28	DT competition®	DT competition®	286	287	3-cross	X	●	110	●	●						●					●	
●			28	DT competition®	DT competition®	288	288	3-cross	X	●	110								●						
●			28	DT competition®	DT competition®	287	288	3-cross	X	●	110		●						●	●				●	
●			28	DT competition®	DT competition®	287	287	3-cross	X	●	110	●			●				●	●				●	
●			28	DT competition®	DT competition®	288	287	3-cross	X	●	110								●	●				●	
●			28	DT competition®	DT competition®	288	287	3-cross	X	●	110								●	●				●	
●			28	DT competition®	DT competition®	305	306	3-cross	X	●	110	●	●							●				●	
●			28	DT competition®	DT competition®	307	307	3-cross	X	●	110									●					
●			28	DT competition®	DT competition®	305	307	3-cross	X	●	110									●				●	
●			28	DT competition®	DT competition®	306	306	3-cross	X	●	110	●			●				●	●				●	
●			28	DT competition®	DT competition®	306	306	3-cross	X	●	110	●			●				●	●				●	
●			28	DT competition®	DT competition®	306	306	3-cross	X	●	110								●	●				●	
●			28	DT competition®	DT competition®	306	306	3-cross	X	●	110								●	●				●	

● = Standard

<sup>2)</sup> For Quick release and Thru bolt, no Thru axle

# WHEELS MTB

Product name	Weight ± 5% [g]	Built-in width [mm]	Rim								Hub															
			Rim dimension	Rim inner width [mm]	Rim outer width [mm]	Rim height [mm]	Clincher tubeless ready	Clincher	Valve hole Presta SV ø 6.5 mm	Valve hole Schrader AV ø 8.5 mm	Material	Hub axle system						Free wheel	Free wheel body		Disc mount					
												Carbon	Aluminum	5/100 mm RWS / Quick release	15/100 mm Thru axle	15/110 mm Thru axle PS <sup>1)</sup>	15/110 mm Thru axle Boost		15/150 mm Thru axle	20/110 mm Thru axle	5/135 mm RWS / Quick release	12/142 mm Thru axle	12/148 mm Thru axle Boost	12/150 mm Thru axle	12/190 mm Thru axle	12/197 mm Thru axle
<b>X SPLINE® wheels</b>																										
<b>NEW X 1900 SPLINE® 27.5</b>	820	100	584 x 20	20	24	18	●	●	●	●	●	●												●	○	
	825	110	584 x 20	20	24	18	●	●	●				●											●	○	
	960	142	584 x 20	20	24	18	●	●	●						○	●			●	●	○*	●	●	○	○	
	950	142	584 x 20	20	24	18	●	●	●						○	●			●	●	○*	●	●	○	○	
	965	148	584 x 20	20	24	18	●	●	●								●			●	●	○*	●	●	○	○
	955	148	584 x 20	20	24	18	●	●	●								●			●	○*	●	●	○	○	○
<b>NEW X 1900 SPLINE® 29</b>	865	100	622 x 20	20	24	18	●	●	●	○	●													●	○	
	870	110	622 x 20	20	24	18	●	●	●				●											●	○	
	1010	142	622 x 20	20	24	18	●	●	●						○	●			●	●	○*	●	●	○	○	
	1000	142	622 x 20	20	24	18	●	●	●						○	●			●	○*	●	●	○	○	○	
	1015	148	622 x 20	20	24	18	●	●	●								●		●	●	○*	●	●	○	○	
	1005	148	622 x 20	20	24	18	●	●	●								●		●	○*	●	●	○	○	○	○

● = Standard

○ = Convertible with included accessories

○ = Option

<sup>1)</sup> Predictive Steering for RS-1

\* Attention: convertible with pawl conversion kit only



	Nipples		Spokes				Technical data					Accessories included													
	Nipple type		No. of spokes	Spoke type		Length		Lacing	Intended use / riding styles	Axle clamping force (min./max.) 4000N / 8000N	Recommended system weight max. [kg]	RWS ratchet wheel mounting system <sup>2)</sup>	Quick release wheel mounting system	5 / 100 mm end caps / axle	15 / 100 mm end caps	5 / 135 mm end caps	12 / 190 mm end caps	12 mm Sram MTB XD 11 kit	Tubeless ready tape	Tubeless valve	Valve adapter Schrader AV to Presta SV	Rim tape	Wheel bag	Centering tool	Center Lock / IS (6-bolt) adapter
	DT Pro Lock® aluminum	DT Pro Lock® brass		Left	Right	Left [mm]	Right [mm]																		
	●		28	DT champion®	DT champion®	286	287	3-cross	X	●	110		●	●					●						●
	●		28	DT champion®	DT champion®	286	288	3-cross	X	●	110								●						●
	●		28	DT champion®	DT champion®	287	287	3-cross	X	●	110		●		●				●	●					●
	●		28	DT champion®	DT champion®	287	287	3-cross	X	●	110		●		●				●	●					●
	●		28	DT champion®	DT champion®	288	287	3-cross	X	●	110								●	●					●
	●		28	DT champion®	DT champion®	288	287	3-cross	X	●	110								●	●					●
	●		28	DT champion®	DT champion®	306	307	3-cross	X	●	110		●	●						●					●
	●		28	DT champion®	DT champion®	306	307	3-cross	X	●	110									●					●
	●		28	DT champion®	DT champion®	307	306	3-cross	X	●	110		●		●				●	●					●
	●		28	DT champion®	DT champion®	307	306	3-cross	X	●	110		●		●				●	●					●
	●		28	DT champion®	DT champion®	307	306	3-cross	X	●	110								●	●					●
	●		28	DT champion®	DT champion®	307	306	3-cross	X	●	110								●	●					●

● = Standard

<sup>2)</sup> For Quick release and Thru bolt, no Thru axle

# WHEELS MTB

SUSPENSION  
WHEELS  
COMPONENTS  
ACCESSORIES  
DT SWISS

Model			Rim								Hub															
Product name	Weight ± 5% [g]	Built-in width [mm]	Rim dimension	Rim inner width [mm]	Rim outer width [mm]	Rim height [mm]	Clincher tubeless ready	Clincher	Valve hole Presta SV / ø 6.5 mm	Valve hole Schrader AV ø 8.5 mm	Material		Hub axle system								Free wheel	Free wheel body		Disc mount		
											Carbon	Aluminum	5 / 100 mm RWS / Quick release	15 / 100 mm Thru axle	15 / 110 mm Thru axle PS <sup>1)</sup>	15 / 110 mm Thru axle Boost	15 / 150 mm Thru axle	20 / 110 mm Thru axle	5 / 135 mm RWS / Quick release	12 / 142 mm Thru axle	12 / 148 mm Thru axle Boost	12 / 150 mm Thru axle	12 / 190 mm Thru axle	12 / 197 mm Thru axle	DT Swiss Ratchet System	Pawl system
<b>XMC/XM SPLINE® wheels</b>																										
<b>NEW XMC 1200 SPLINE® 27.5</b>	640	100	584 x 24	24	30	30	●	●	●	○	●												●	○		
	740	110	584 x 24	24	30	30	●	●	●			●												●		
	645	110	584 x 24	24	30	30	●	●	●					●									●	○		
	770	142	584 x 24	24	30	30	●	●	●						○	●						●*	●	○	●	○
	775	148	584 x 24	24	30	30	●	●	●							●						●*	●	○	●	○
<b>NEW XMC 1200 SPLINE® 29</b>	690	100	622 x 24	24	30	30	●	●	●	○	●													●	○	
	790	110	622 x 24	24	30	30	●	●	●				●												●	
	695	110	622 x 24	24	30	30	●	●	●							●								●	○	
	805	142	622 x 24	24	30	30	●	●	●						○	●						●*	●	○	●	○
	810	148	622 x 24	24	30	30	●	●	●							●						●*	●	○	●	○
<b>XM 1501 SPLINE® ONE 26</b>	725	100	559 x 22.5	22.5	27	19.5	●	●			●	○	●												●	
	820	142	559 x 22.5	22.5	27	19.5	●	●			●					○	●					●*	●	○	●	
	810	142	559 x 22.5	22.5	27	19.5	●	●			●					○	●					●*	○	●	●	
<b>XM 1501 SPLINE® ONE 27.5</b>	745	100	584 x 22.5	22.5	27	19.5	●	●			●	○	●												●	
	<b>NEW</b> 815	110	584 x 22.5	22.5	27	19.5	●	●			●		●												●	
	845	142	584 x 22.5	22.5	27	19.5	●	●			●					○	●					●*	●	○	●	
	835	142	584 x 22.5	22.5	27	19.5	●	●			●					○	●					●*	○	●	●	
<b>XM 1501 SPLINE® ONE 29</b>	795	100	622 x 22.5	22.5	27	19.5	●	●			●	○	●												●	
	855	110	622 x 22.5	22.5	27	19.5	●	●			●		●												●	
	885	142	622 x 22.5	22.5	27	19.5	●	●			●					○	●					●*	●	○	●	
	875	142	622 x 22.5	22.5	27	19.5	●	●			●					○	●					●*	○	●	●	

● = Standard

○ = Convertible with included accessories

○ = Option

<sup>1)</sup> Predictive Steering for RS-1

\* 36 teeth SL

Nipples		Spokes		Technical data							Accessories included													
Nipple type		No. of spokes	Spoke type		Length		Lacing	Intended use / riding styles	Axle clamping force (min./max.) 4000N / 8000N	Recommended system weight max. [kg]	RWS ratchet wheel mounting system <sup>2)</sup>	Quick release wheel mounting system	5 / 100 mm end caps / axle	15 / 100 mm end caps	5 / 135 mm end caps	12 / 190 mm end caps	12 mm Sram MTB XD 11 kit	Tubeless ready tape	Tubeless valve	Valve adapter Schrader AV to Presta SV	Rim tape	Wheel bag	Centering tool	Center Lock / IS (6-bolt) adapter
DT Pro Lock® aluminum	DT Pro Lock® brass		Left	Right	Left [mm]	Right [mm]																		
●		28	DT aerolite®	DT aerolite®	277	277	3-cross	XM	●	110								●				●	●	●
●		28	DT aerolite®	DT aerolite®	276	276	3-cross	XM	●	110								●				●	●	
●		28	DT aerolite®	DT aerolite®	277	277	3-cross	XM	●	110								●				●	●	●
●		28	DT aerolite®	DT aero comp®	277	277	3-cross	XM	●	110							●	●	●			●	●	●
●		28	DT aerolite®	DT aero comp®	277	277	3-cross	XM	●	110							●	●	●			●	●	●
●		28	DT aero comp®	DT aerolite®	296	297	3-cross	XM	●	110								●				●	●	●
●		28	DT aero comp®	DT aerolite®	296	297	3-cross	XM	●	110								●				●	●	●
●		28	DT aero comp®	DT aerolite®	296	297	3-cross	XM	●	110								●				●	●	●
●		28	DT aerolite®	DT aero comp®	297	296	3-cross	XM	●	110							●	●	●			●	●	●
●		28	DT aerolite®	DT aero comp®	297	296	3-cross	XM	●	110							●	●	●			●	●	●
●		28	DT competition®	DT competition®	272	274	3-cross	XM	●	110	●		●					●						
●		28	DT competition®	DT competition®	274	273	3-cross	XM	●	110	●			●				●	●					
●		28	DT competition®	DT competition®	274	273	3-cross	XM	●	110	●			●				●	●					
●		28	DT competition®	DT competition®	285	286	3-cross	XM	●	110	●		●					●						
●		28	DT competition®	DT competition®	285	285	3-cross	XM	●	110								●						
●		28	DT competition®	DT competition®	286	285	3-cross	XM	●	110	●			●				●	●					
●		28	DT competition®	DT competition®	286	285	3-cross	XM	●	110	●			●				●	●					
●		28	DT competition®	DT competition®	303	304	3-cross	XM	●	110	●		●					●						
●		28	DT competition®	DT competition®	303	304	3-cross	XM	●	110								●						
●		28	DT competition®	DT competition®	304	303	3-cross	XM	●	110	●			●				●	●					
●		28	DT competition®	DT competition®	304	303	3-cross	XM	●	110	●			●				●	●					

● = Standard

<sup>2)</sup> For Quick release and Thru bolt, no Thru axle

# WHEELS MTB

Model			Rim										Hub																	
Product name	Weight ± 5% [g]	Built-in width [mm]	Rim dimension	Rim inner width [mm]	Rim outer width [mm]	Rim height [mm]	Clincher tubeless ready	Clincher	Valve hole Presta SV ø 6.5 mm	Valve hole Schrader AV ø 8.5 mm	Material		Hub axle system								Free wheel		Free wheel body		Disc mount					
											Carbon	Aluminum	5 / 100 mm RWS / Quick release	15 / 100 mm Thru axle	15 / 110 mm Thru axle PS <sup>1)</sup>	15 / 110 mm Thru axle Boost	15 / 150 mm Thru axle	20 / 110 mm Thru axle	5 / 135 mm RWS / Quick release	12 / 142 mm Thru axle	12 / 148 mm Thru axle Boost	12 / 150 mm Thru axle	12 / 190 mm Thru axle	12 / 197 mm Thru axle	DT Swiss Ratchet System	Pawl system	Shimano MTB 9 / 10 / 11 and Sram MTB 9 / 10	Sram MTB XD 11	Center Lock	IS (6-bolt)
<b>M SPLINE® wheels</b>																														
<b>M 1700 SPLINE® TWO 27.5</b>	790	100	584 x 22.5	22.5	27	19.5	●	●			●	●														●	○			
	<b>NEW</b>	890	110	584 x 22.5	22.5	27	19.5	●	●		●		●														●			
	<b>NEW</b>	795	110	584 x 22.5	22.5	27	19.5	●	●					●												●	○			
		925	142	584 x 22.5	22.5	27	19.5	●	●			●										●		●	○	●	○			
		915	142	584 x 22.5	22.5	27	19.5	●	●			●										●		○	●	○	●	○		
	<b>NEW</b>	930	148	584 x 22.5	22.5	27	19.5	●	●			●										●		●	○	●	○	●	○	
<b>NEW</b>	920	148	584 x 22.5	22.5	27	19.5	●	●			●										●		○	●	○	●	○			
<b>M 1700 SPLINE® TWO 29</b>		830	622 x 22.5	22.5	27	19.5	●	●			●	●														●	○			
	<b>NEW</b>	930	110	622 x 22.5	22.5	27	19.5	●	●		●		●														●			
	<b>NEW</b>	835	110	622 x 22.5	22.5	27	19.5	●	●			●		●												●	○			
		965	142	622 x 22.5	22.5	27	19.5	●	●			●										●		●	○	●	○	●	○	
		955	142	622 x 22.5	22.5	27	19.5	●	●			●										●		○	●	○	●	○	●	○
	<b>NEW</b>	970	148	622 x 22.5	22.5	27	19.5	●	●			●										●		●	○	●	○	●	○	
	<b>NEW</b>	960	148	622 x 22.5	22.5	27	19.5	●	●			●										●		○	●	○	●	○	●	○

● = Standard

○ = Convertible with included accessories

○ = Option

<sup>1)</sup> Predictive Steering for RS-1

	Nipples		Spokes				Technical data					Accessories included													
	Nipple type		No. of spokes	Spoke type		Length		Lacing	Intended use / riding styles	Axle clamping force (min./max.) 4000N / 8000N	Recommended system weight max. [kg]	RWS ratchet wheel mounting system <sup>2)</sup>	Quick release wheel mounting system	5 / 100 mm end caps / axle	15 / 100 mm end caps	5 / 135 mm end caps	12 / 190 mm end caps	12 mm Sram MTB XD 11 kit	Tubeless ready tape	Tubeless valve	Valve adapter Schrader AV to Presta SV	Rim tape	Wheel bag	Centering tool	Center Lock / IS (6-bolt) adapter
	DT Pro Lock® aluminum	DT Pro Lock® brass		Left	Right	Left [mm]	Right [mm]																		
●			28	DT competition®	DT competition®	285	286	3-cross	M	●	110	●	●						●					●	
●			28	DT competition®	DT competition®	287	287	3-cross	M	●	110								●						
●			28	DT competition®	DT competition®	286	285	3-cross	M	●	110								●					●	
●			28	DT competition®	DT competition®	286	285	3-cross	M	●	110	●			●			●	●					●	
●			28	DT competition®	DT competition®	286	285	3-cross	M	●	110	●			●			●	●					●	
●			28	DT competition®	DT competition®	286	286	3-cross	M	●	110							●	●					●	
●			28	DT competition®	DT competition®	286	286	3-cross	M	●	110							●	●					●	
●			28	DT competition®	DT competition®	304	305	3-cross	M	●	110	●	●						●					●	
●			28	DT competition®	DT competition®	304	305	3-cross	M	●	110								●					●	
●			28	DT competition®	DT competition®	304	305	3-cross	M	●	110								●					●	
●			28	DT competition®	DT competition®	305	304	3-cross	M	●	110	●			●			●	●					●	
●			28	DT competition®	DT competition®	305	304	3-cross	M	●	110	●			●			●	●					●	
●			28	DT competition®	DT competition®	305	304	3-cross	M	●	110							●	●					●	
●			28	DT competition®	DT competition®	305	304	3-cross	M	●	110							●	●					●	

● = Standard

<sup>2)</sup> For Quick release and Thru bolt, no Thru axle

# WHEELS MTB

SUSPENSION

WHEELS

COMPONENTS

ACCESSORIES

DT SWISS

Model		Rim											Hub													
Product name	Weight ± 5% [g]	Built-in width [mm]	Rim dimension	Rim inner width [mm]	Rim outer width [mm]	Rim height [mm]	Clincher tubeless ready	Clincher	Valve hole Presta SV ø 6.5 mm	Valve hole Schrader AV ø 8.5 mm	Material		Hub axle system								Free wheel		Free wheel body		Disc mount	
											Carbon	Aluminum	5 / 100 mm RWS / Quick release	15 / 100 mm Thru axle	15 / 110 mm Thru axle PS <sup>1)</sup>	15 / 110 mm Thru axle Boost	15 / 150 mm Thru axle	20 / 110 mm Thru axle	5 / 135 mm RWS / Quick release	12 / 142 mm Thru axle	12 / 148 mm Thru axle Boost	12 / 150 mm Thru axle	12 / 190 mm Thru axle	12 / 197 mm Thru axle	DT Swiss Ratchet System	Pawl system
<b>M SPLINE® wheels</b>																										
<b>NEW</b> M 1900 SPLINE® 27.5	855	100	584 x 22.5	22.5	27	19.5	●	●	●	●	●	●	●	●										●	○	
	860	110	584 x 22.5	22.5	27	19.5	●	●	●	●	●	●	●	●										●	○	
	1000	142	584 x 22.5	22.5	27	19.5	●	●	●	●	●	●	●	●		○	●					●	●	○*	●	○
	990	142	584 x 22.5	22.5	27	19.5	●	●	●	●	●	●	●	●		○	●					●	●	○*	●	○
	1005	148	584 x 22.5	22.5	27	19.5	●	●	●	●	●	●	●	●				●				●	●	○*	●	○
	995	148	584 x 22.5	22.5	27	19.5	●	●	●	●	●	●	●	●				●				●	○*	●	●	○
<b>NEW</b> M 1900 SPLINE® 29	905	100	622 x 22.5	22.5	27	19.5	●	●	●	●	●	●	●	●										●	○	
	910	110	622 x 22.5	22.5	27	19.5	●	●	●	●	●	●	●	●										●	○	
	1045	142	622 x 22.5	22.5	27	19.5	●	●	●	●	●	●	●	●		○	●					●	●	○*	●	○
	1035	142	622 x 22.5	22.5	27	19.5	●	●	●	●	●	●	●	●		○	●					●	○*	●	●	○
	1050	148	622 x 22.5	22.5	27	19.5	●	●	●	●	●	●	●	●				●				●	●	○*	●	○
	1040	148	622 x 22.5	22.5	27	19.5	●	●	●	●	●	●	●	●				●				●	○*	●	●	○

● = Standard

○ = Convertible with included accessories

○ = Option

<sup>1)</sup> Predictive Steering for RS-1

\* Attention: convertible with pawl conversion kit only

	Nipples		Spokes				Technical data				Accessories included														
	Nipple type		No. of spokes	Spoke type		Length		Lacing	Intended use / riding styles	Axle clamping force (min./max.) 4000N / 8000N	Recommended system weight max. [kg]	RWS ratchet wheel mounting system <sup>2)</sup>	Quick release wheel mounting system	5 / 100 mm end caps / axle	15 / 100 mm end caps	5 / 135 mm end caps	12 / 190 mm end caps	12 mm Sram MTB XD 11 kit	Tubeless ready tape	Tubeless valve	Valve adapter Schrader AV to Presta SV	Rim tape	Wheel bag	Centering tool	Center Lock / IS (6-bolt) adapter
	DT Pro Lock® aluminum	DT Pro Lock® brass		Left	Right	Left [mm]	Right [mm]																		
	●		28	DT champion®	DT champion®	285	286	3-cross	M	●	110		●	●					●						●
	●		28	DT champion®	DT champion®	285	286	3-cross	M	●	110								●						●
	●		28	DT champion®	DT champion®	286	285	3-cross	M	●	110		●		●				●	●					●
	●		28	DT champion®	DT champion®	286	285	3-cross	M	●	110		●						●	●					●
	●		28	DT champion®	DT champion®	286	285	3-cross	M	●	110								●	●					●
	●		28	DT champion®	DT champion®	304	305	3-cross	M	●	110		●	●						●					●
	●		28	DT champion®	DT champion®	304	305	3-cross	M	●	110									●					●
	●		28	DT champion®	DT champion®	305	305	3-cross	M	●	110		●		●				●	●					●
	●		28	DT champion®	DT champion®	305	305	3-cross	M	●	110		●		●				●	●					●
	●		28	DT champion®	DT champion®	305	304	3-cross	M	●	110								●	●					●
	●		28	DT champion®	DT champion®	305	304	3-cross	M	●	110								●	●					●

● = Standard

<sup>2)</sup> For Quick release and Thru bolt, no Thru axle

# WHEELS MTB

Model			Rim										Hub															
Product name	Weight ± 5% [g]	Built-in width [mm]	Rim dimension	Rim inner width [mm]	Rim outer width [mm]	Rim height [mm]	Clincher tubeless ready	Clincher	Valve hole Presta SV ø 6.5 mm	Valve hole Schrader AV ø 8.5 mm	Material		Hub axle system								Free wheel		Free wheel body		Disc mount			
											Carbon	Aluminum	5/100 mm RWS / Quick release	15/100 mm Thru axle	15/110 mm Thru axle PS <sup>1)</sup>	15/110 mm Thru axle Boost	15/150 mm Thru axle	20/110 mm Thru axle	5/135 mm RWS / Quick release	12/142 mm Thru axle	12/148 mm Thru axle Boost	12/150 mm Thru axle	12/190 mm Thru axle	12/197 mm Thru axle	DT Swiss Ratchet System	Pawl system	Shimano MTB 9 / 10 / 11 and Sram MTB 9 / 10	Sram MTB XD 11
<b>EX SPLINE® wheels</b>																												
<b>EX 1501 SPLINE® ONE 26</b>		790	100	559 x 25	25	30	21	●	●		●	●	●															●
	<b>NEW</b>	815	110	559 x 25	25	30	21	●	●		●				●													●
		870	142	559 x 25	25	30	21	●	●		●											●*		●	○		●	●
		860	142	559 x 25	25	30	21	●	●		●											●*		○	●		●	●
<b>EX 1501 SPLINE® ONE 27.5</b>		815	100	584 x 25	25	30	21	●	●		●	●	●															●
	<b>NEW</b>	850	110	584 x 25	25	30	21	●	●		●				●													●
		915	142	584 x 25	25	30	21	●	●		●											●*		●	○		●	●
		905	142	584 x 25	25	30	21	●	●		●											●*		○	●		●	●
<b>EX 1501 SPLINE® ONE 29</b>		860	100	622 x 25	25	30	21	●	●		●	●	●															●
	<b>NEW</b>	885	110	622 x 25	25	30	21	●	●		●				●													●
		960	142	622 x 25	25	30	21	●	●		●											●*		●	○		●	●
		950	142	622 x 25	25	30	21	●	●		●											●*		○	●		●	●

● = Standard

○ = Convertible with included accessories

○ = Option

<sup>1)</sup> Predictive Steering for RS-1

\* 36 teeth SL



	Nipples		Spokes				Technical data					Accessories included													
	Nipple type		No. of spokes	Spoke type		Length		Lacing	Intended use / riding styles	Axle clamping force (min./max.) 4000N / 8000N	Recommended system weight max. [kg]	RWS ratchet wheel mounting system <sup>2)</sup>	Quick release wheel mounting system	5 / 100 mm end caps / axle	15 / 100 mm end caps	5 / 135 mm end caps	12 / 190 mm end caps	12 mm Sram MTB XD 11 kit	Tubeless ready tape	Tubeless valve	Valve adapter Schrader AV to Presta SV	Rim tape	Wheel bag	Centering tool	Center Lock / IS (6-bolt) adapter
	DT Pro Lock® aluminum	DT Pro Lock® brass		Left	Right	Left [mm]	Right [mm]																		
	●		28	DT competition®	DT competition®	271	273	3-cross	EX	●	110	●	●						●						
	●		28	DT competition®	DT competition®	271	272	3-cross	EX	●	110								●						
	●		28	DT competition®	DT competition®	273	271	3-cross	EX	●	110	●			●				●	●					
	●		28	DT competition®	DT competition®	273	271	3-cross	EX	●	110	●			●				●	●					
	●		28	DT competition®	DT competition®	284	285	3-cross	EX	●	110	●	●						●						
	●		28	DT competition®	DT competition®	283	284	3-cross	EX	●	110								●						
	●		28	DT competition®	DT competition®	285	284	3-cross	EX	●	110	●			●				●	●					
	●		28	DT competition®	DT competition®	285	284	3-cross	EX	●	110	●			●				●	●					
	●		28	DT competition®	DT competition®	303	305	3-cross	EX	●	110	●	●						●						
	●		28	DT competition®	DT competition®	303	304	3-cross	EX	●	110								●						
	●		28	DT competition®	DT competition®	305	303	3-cross	EX	●	110	●			●				●	●					
	●		28	DT competition®	DT competition®	305	303	3-cross	EX	●	110	●			●				●	●					

● = Standard

<sup>2)</sup> For Quick release and Thru bolt, no Thru axle

# WHEELS MTB

Model			Rim										Hub															
Product name	Weight ± 5% [g]	Built-in width [mm]	Rim dimension	Rim inner width [mm]	Rim outer width [mm]	Rim height [mm]	Clincher tubeless ready	Clincher	Valve hole Presta SV ø 6.5 mm	Valve hole Schrader AV ø 8.5 mm	Material		Hub axle system								Free wheel		Free wheel body		Disc mount			
											Carbon	Aluminum	5 / 100 mm RWS / Quick release	15 / 100 mm Thru axle	15 / 110 mm Thru axle PS <sup>1)</sup>	15 / 110 mm Thru axle Boost	15 / 150 mm Thru axle	20 / 110 mm Thru axle	5 / 135 mm RWS / Quick release	12 / 142 mm Thru axle	12 / 148 mm Thru axle Boost	12 / 150 mm Thru axle	12 / 190 mm Thru axle	12 / 197 mm Thru axle	DT Swiss Ratchet System	Pawl system	Shimano MTB 9 / 10 / 11 and Sram MTB 9 / 10	Sram MTB XD 11
<b>E SPLINE® wheels</b>																												
<b>E 1700 SPLINE® TWO 27.5</b>		860	100	584 x 25	25	30	21	●	●		●	○	●													●	○	
	<b>NEW</b>	865	110	584 x 25	25	30	21	●	●		●			●												●	○	
		955	110	584 x 25	25	30	21	●	●		●				●												●	○
		990	142	584 x 25	25	30	21	●	●		●					○	●				●				●	○	●	○
	<b>NEW</b>	980	142	584 x 25	25	30	21	●	●		●					○	●				●				○	●	●	○
	<b>NEW</b>	995	148	584 x 25	25	30	21	●	●		●							●			●				○	●	●	○
<b>NEW</b>	985	148	584 x 25	25	30	21	●	●		●							●			●				○	●	●	○	
<b>E 1700 SPLINE® TWO 29</b>		890	100	622 x 25	25	30	21	●	●		●	○	●													●	○	
	<b>NEW</b>	895	110	622 x 25	25	30	21	●	●		●			●												●	○	
		1000	110	622 x 25	25	30	21	●	●		●				●												●	○
		1030	142	622 x 25	25	30	21	●	●		●					○	●				●				○	●	●	○
		1020	142	622 x 25	25	30	21	●	●		●					○	●				●				○	●	●	○
	<b>NEW</b>	1035	148	622 x 25	25	30	21	●	●		●							●			●				○	●	●	○
	<b>NEW</b>	1025	148	622 x 25	25	30	21	●	●		●							●			●				○	●	●	○

● = Standard

○ = Convertible with included accessories

○ = Option

<sup>1)</sup> Predictive Steering for RS-1

	Nipples		Spokes				Technical data					Accessories included													
	Nipple type		No. of spokes	Spoke type		Length		Lacing	Intended use / riding styles	Axle clamping force (min./max.) 4000N / 8000N	Recommended system weight max. [kg]	RWS ratchet wheel mounting system <sup>2)</sup>	Quick release wheel mounting system	5 / 100 mm end caps / axle	15 / 100 mm end caps	5 / 135 mm end caps	12 / 190 mm end caps	12 mm Sram MTB XD 11 kit	Tubeless ready tape	Tubeless valve	Valve adapter Schrader AV to Presta SV	Rim tape	Wheel bag	Centering tool	Center Lock / IS (6-bolt) adapter
	DT Pro Lock® aluminum	DT Pro Lock® brass		Left	Right	Left [mm]	Right [mm]																		
●			28	DT competition®	DT competition®	283	284	3-cross	E	●	130								●						●
●			28	DT competition®	DT competition®	283	285	3-cross	E	●	130								●						●
●			28	DT competition®	DT competition®	285	285	3-cross	E	●	130								●						●
●			28	DT competition®	DT competition®	284	284	3-cross	E	●	130	●			●			●	●						●
●			28	DT competition®	DT competition®	284	284	3-cross	E	●	130	●			●			●	●						●
●			28	DT competition®	DT competition®	285	284	3-cross	E	●	130							●	●						●
●			28	DT competition®	DT competition®	285	284	3-cross	E	●	130							●	●						●
●			28	DT competition®	DT competition®	302	303	3-cross	E	●	130								●						●
●			28	DT competition®	DT competition®	302	304	3-cross	E	●	130								●						●
●			28	DT competition®	DT competition®	304	304	3-cross	E	●	130								●						●
●			28	DT competition®	DT competition®	303	303	3-cross	E	●	130	●			●			●	●						●
●			28	DT competition®	DT competition®	303	303	3-cross	E	●	130	●			●			●	●						●
●			28	DT competition®	DT competition®	304	303	3-cross	E	●	130							●	●						●
●			28	DT competition®	DT competition®	304	303	3-cross	E	●	130							●	●						●

● = Standard

<sup>2)</sup> For Quick release and Thru bolt, no Thru axle

# WHEELS MTB

Model			Rim								Hub																		
Product name	Weight ± 5% [g]	Built-in width [mm]	Rim dimension	Rim inner width [mm]	Rim outer width [mm]	Rim height [mm]	Clincher tubeless ready	Clincher	Valve hole Presta SV ø 6.5 mm	Valve hole Schrader AV ø 8.5 mm	Material		Hub axle system								Free wheel		Free wheel body		Disc mount				
											Carbon	Aluminum	5 / 100 mm RWS / Quick release	15 / 100 mm Thru axle	15 / 110 mm Thru axle PS <sup>1)</sup>	15 / 110 mm Thru axle Boost	15 / 150 mm Thru axle	20 / 110 mm Thru axle	5 / 135 mm RWS / Quick release	12 / 142 mm Thru axle	12 / 148 mm Thru axle Boost	12 / 150 mm Thru axle	12 / 190 mm Thru axle	12 / 197 mm Thru axle	DT Swiss Ratchet System	Pawl system	Shimano MTB 9 / 10 / 11 and Sram MTB 9 / 10	Sram MTB XD 11	Center Lock
<b>E SPLINE® wheels</b>																													
<b>NEW E 1900 SPLINE® 27.5</b>	885	100	584 x 25	25	30	21	●	●	●	○	●															●	○		
	890	110	584 x 25	25	30	21	●	●	●			●															●	○	
	1000	110	584 x 25	25	30	21	●	●	●				●														●		
	1030	142	584 x 25	25	30	21	●	●	●							○	●								●	●	○*	●	○
	1020	142	584 x 25	25	30	21	●	●	●							○	●								●	○*	●	●	○
	1035	148	584 x 25	25	30	21	●	●	●									●							●	●	○*	●	○
	1025	148	584 x 25	25	30	21	●	●	●									●							●	○*	●	●	○
<b>NEW E 1900 SPLINE® 29</b>	935	100	622 x 25	25	30	21	●	●	●	○	●																●	○	
	940	110	622 x 25	25	30	21	●	●	●				●														●	○	
	1045	110	622 x 25	25	30	21	●	●	●					●													●		
	1075	142	622 x 25	25	30	21	●	●	●							○	●								●	●	○*	●	○
	1065	142	622 x 25	25	30	21	●	●	●							○	●								●	○*	●	●	○
	1080	148	622 x 25	25	30	21	●	●	●									●							●	●	○*	●	○
	1070	148	622 x 25	25	30	21	●	●	●									●							●	○*	●	●	○

● = Standard

○ = Convertible with included accessories

○ = Option

<sup>1)</sup> Predictive Steering for RS-1

\* Attention: convertible with pawl conversion kit only

	Nipples		No. of spokes	Spokes		Technical data						Accessories included													
	Nipple type			Spoke type		Length		Lacing	Intended use / riding styles	Axle clamping force (min./max.) 4000N / 8000N	Recommended system weight max. [kg]	RWS ratchet wheel mounting system <sup>2)</sup>	Quick release wheel mounting system	5 / 100 mm end caps / axle	15 / 100 mm end caps	5 / 135 mm end caps	12 / 190 mm end caps	12 mm Sram MTB XD 11 kit	Tubeless ready tape	Tubeless valve	Valve adapter Schrader AV to Presta SV	Rim tape	Wheel bag	Centering tool	Center Lock / IS (6-bolt) adapter
	DT Pro Lock® aluminum	DT Pro Lock® brass		Left	Right	Left [mm]	Right [mm]																		
●			28	DT champion®	DT champion®	283	284	3-cross	E	●	130								●						●
●			28	DT champion®	DT champion®	284	285	3-cross	E	●	130								●						●
●			28	DT champion®	DT champion®	285	285	3-cross	E	●	130								●						●
●			28	DT champion®	DT champion®	284	284	3-cross	E	●	130	●			●			●	●						●
●			28	DT champion®	DT champion®	284	284	3-cross	E	●	130	●			●			●	●						●
●			28	DT champion®	DT champion®	284	284	3-cross	E	●	130							●	●						●
●			28	DT champion®	DT champion®	302	303	3-cross	E	●	130								●						●
●			28	DT champion®	DT champion®	302	304	3-cross	E	●	130								●						●
●			28	DT champion®	DT champion®	304	304	3-cross	E	●	130								●						●
●			28	DT champion®	DT champion®	303	303	3-cross	E	●	130	●			●			●	●						●
●			28	DT champion®	DT champion®	303	303	3-cross	E	●	130	●			●			●	●						●
●			28	DT champion®	DT champion®	304	303	3-cross	E	●	130							●	●						●
●			28	DT champion®	DT champion®	304	303	3-cross	E	●	130							●	●						●

● = Standard

<sup>2)</sup> For Quick release and Thru bolt, no Thru axle

# WHEELS MTB

Model			Rim								Hub													
Product name	Weight ± 5% [g]	Built-in width [mm]	Rim dimension	Rim inner width [mm]	Rim outer width [mm]	Rim height [mm]	Clincher tubeless ready	Clincher	Valve hole Presta SV Ø 6.5 mm	Valve hole Schrader AV Ø 8.5 mm	Material		Hub axle system							Free wheel	Free wheel body		Disc mount	
											Carbon	Aluminum	5 / 100 mm RWS / Quick release	15 / 100 mm Thru axle	15 / 110 mm Thru axle PS <sup>1)</sup>	15 / 110 mm Thru axle Boost	15 / 150 mm Thru axle	20 / 110 mm Thru axle	5 / 135 mm RWS / Quick release	12 / 142 mm Thru axle	12 / 148 mm Thru axle Boost	12 / 150 mm Thru axle	12 / 190 mm Thru axle	12 / 197 mm Thru axle
<b>FR / BR CLASSIC wheels</b>																								
<b>FR 1950 CLASSIC 27.5</b>	960	110	584 x 27.5	27.5	33	22.5	●		○	●	●	○	●										●	
	1060	142	584 x 27.5	27.5	33	22.5	●		○	●	●		○	●							●		●	
	1090	150	584 x 27.5	27.5	33	22.5	●		○	●	●					●					●		●	
<b>NEW BR 2250 CLASSIC 26</b>	1050	150	559 x 76	76	81	16		●	●		●			●									●	
	1180	197	559 x 76	76	81	16		●	●		●							○	●			●	○	

● = Standard

○ = Convertible with included accessories

○ = Option

<sup>1)</sup> Predictive Steering for RS-1

SUSPENSION  
WHEELS  
COMPONENTS  
ACCESSORIES  
DT SWISS

	Nipples		No. of spokes	Spokes		Length		Technical data				Accessories included														
	Nipple type			Left	Right	Left [mm]	Right [mm]	Lacing	Intended use / riding styles	Axle clamping force (min./max.) 4000N / 8000N	Recommended system weight max. [kg]	RWS ratchet wheel mounting system <sup>2)</sup>	Quick release wheel mounting system	5 / 100 mm end caps / axle	15 / 100 mm end caps	5 / 135 mm end caps	12 / 190 mm end caps	12 mm Sram MTB XD 11 kit	Tubeless ready tape	Tubeless valve	Valve adapter Schrader AV to Presta SV	Rim tape	Wheel bag	Centering tool	Center Lock / IS (6-bolt) adapter	
	DT Pro Lock® aluminum	DT Pro Lock® brass																								
	●		32	DT competition®	DT competition®	270	272	3-cross	FR	●	140			●					●	●						
	●		32	DT competition®	DT competition®	272	272	3-cross	FR	●	140								●	●						
	●		32	DT competition®	DT competition®	271	271	3-cross	FR	●	140								●	●	●	●				
	●		32	DT competition®	DT competition®	266	266	3-cross	BR	●	130											●			●	
	●		32	DT competition®	DT competition®	267	265	3-cross	BR	●	130						●	●				●			●	

● = Standard

<sup>2)</sup> For Quick release and Thru bolt, no Thru axle

# WHEELS ROAD

Model		Rim										Hub																							
Product name	Weight ± 5% [g]	Built-in width [mm]	Rim dimension	Rim inner width [mm]	Rim outer width [mm]	Rim height [mm]	Clincher tubeless ready	Tubular	Valve hole Presta SV ø 6.5 mm	Material		Hub axle system							Free wheel		Free wheel body			Disc mount											
										Carbon	Aluminum	5/100 mm RWS / Quick release	9/100 mm DT Swiss Thru bolt	12/100 mm RWS Road	15/100 mm Thru axle	5/130 mm RWS / Quick release	5/135 mm RWS / Quick release	10/135 mm DT Swiss Thru bolt	12/135 mm Thru axle	12/142 mm Thru axle	Bolt on 100 mm FW / 120 mm RW	DT Swiss Ratchet System	Pawl system	Shimano Road 9 / 10 and Sram Road 9 / 10	Shimano Road 11 incl. washer for 10 speed	Campagnolo 9 / 10 / 11	Sram Road XD-R	Track	Center Lock	IS (6-bolt)					
<b>DICUT® wheels</b>																																			
<b>NEW</b> RRC 65 DICUT® C	720	100	622 x 18	18	25	65	●	●	●	●	●	●	●	●	●	●	●	●	●	●	●	●	●	●	●	●	●	●	●	●	●	●	●	●	
	865	130	622 x 18	18	25	65	●	●	●	●	●	●	●	●	●	●	●	●	●	●	●	●	●	●	●	●	●	●	●	●	●	●	●		
<b>NEW</b> RRC 65 DICUT® T	630	100	633 x 25	25	25	65	●	●	●	●	●	●	●	●	●	●	●	●	●	●	●	●	●	●	●	●	●	●	●	●	●	●	●		
	775	130	633 x 25	25	25	65	●	●	●	●	●	●	●	●	●	●	●	●	●	●	●	●	●	●	●	●	●	●	●	●	●	●	●	●	
RRC 2.0 DISC DICUT® T	780	130	633 x 20	20	20	65	●	●	●	●	●	●	●	●	●	●	●	●	●	●	●	●	●	●	●	●	●	●	●	●	●	●	●	●	
<b>NEW</b> RR 21 DICUT®	630	100	622 x 18	18	22	21	●	●	●	●	●	●	●	●	●	●	●	●	●	●	●	●	●	●	●	●	●	●	●	●	●	●	●	●	
	785	130	622 x 18	18	22	21	●	●	●	●	●	●	●	●	●	●	●	●	●	●	●	●	●	●	●	●	●	●	●	●	●	●	●	●	●
R 20 DICUT®	675	100	622 x 16	16	21	21	●	●	●	●	●	●	●	●	●	●	●	●	●	●	●	●	●	●	●	●	●	●	●	●	●	●	●	●	●
	858	130	622 x 16	16	21	21	●	●	●	●	●	●	●	●	●	●	●	●	●	●	●	●	●	●	●	●	●	●	●	●	●	●	●	●	●
<b>DICUT® db wheels</b>																																			
<b>NEW</b> RR 21 DICUT® db	665	100	622 x 18	18	22	21	●	●	●	●	●	●	●	●	●	●	●	●	●	●	●	●	●	●	●	●	●	●	●	●	●	●	●	●	●
	805	135	622 x 18	18	22	21	●	●	●	●	●	●	●	●	●	●	●	●	●	●	●	●	●	●	●	●	●	●	●	●	●	●	●	●	●

● = Standard

◐ = Convertible with included accessories

○ = Option

\* 36 teeth SL



Nipples		Spokes							Technical data				Accessories included							
Nipple type		No. of spokes	Spoke type		Length				Lacing	Intended use / riding styles	Axle clamping force (min. / max.) 4000N / 8000N	Recommended system weight max. [kg]	RWS Ratchet wheel mounting system <sup>1)</sup>							
DT Pro Lock® aluminum	DT Pro Lock® brass		Left	Right	Left cross [mm]	Left radial [mm]	Right cross [mm]	Right radial [mm]					Tubeless ready tape (front and rear)	Tubeless valve	Valve guard	Wheel bag	Centering tool	Center Lock / IS (6-bolt) adapter	Carbon brake pads (front and rear)	
●		16	DT aerolite®	DT aerolite®		249		249	radial	RR	●	100	●	●	●	●				
●		20	DT aerolite®	DT aero comp®	254		247		1-cross	RR	●	100	●	●	●	●	●			●
●		16	DT aerolite®	DT aerolite®		249		249	radial	RR	●	100	●		●	●				
●		20	DT aerolite®	DT aero comp®	254		247		1-cross	RR	●	100	●		●	●	●			●
										RR	●	120	●			●				
●		20	DT aerolite®	DT aerolite®		284		284	radial	RR	●	110	●	●						
●		24	DT aerolite®	DT aero comp®	286		279		1-cross	RR	●	110	●	●	●					
●		16	DT new aero®	DT new aero®		284		284	radial	RR	●	110	●		●					
●		20	DT new aero®	DT new aero®	286		281		2-cross	RR	●	110	●	●	●					
●		24	DT aerolite®	DT aerolite®	289		294		2-cross	R	●	110	●		●					
●		24	DT aerolite®	DT aero comp®	293		292		2-cross	R	●	110	●	●	●					

● = Standard

<sup>1)</sup> For Quick release



Nipples		Spokes								Technical data				Accessories included						
Nipple type		No. of spokes	Spoke type		Length				Lacing	Intended use / riding styles	Axle clamping force (min./max.) 4000N / 8000N	Recommended system weight max. [kg]	RWS Ratchet wheel mounting system <sup>1)</sup>	Tubeless ready tape (front and rear)	Tubeless valve	Valve guard	Wheel bag	Centering tool	Center Lock / IS (6-bolt) adapter	Carbon brake pads (front and rear)
DT Pro Lock® aluminum	DT Pro Lock® brass		Left	Right	Left cross [mm]	Left radial [mm]	Right cross [mm]	Right radial [mm]												
●		20	DT aerolite®	DT aerolite®		291		291	radial	RR	●	90	●		●		●			
●		24	DT aero comp®	DT aero comp®	292		298		3-cross	RR	●	90	●	●	●		●	●		●
●		20	DT aerolite®	DT aerolite®		290		290	radial	RR	●	100	●		●			●		
●		24	DT aero comp®	DT aero comp®	302		300		2-cross	RR	●	100	●	●	●			●		●
●		20	DT aerolite®	DT aerolite®		281		281	radial	RR	●	100	●		●			●		
●		24	DT aero comp®	DT aero comp®	293		291		2-cross	RR	●	100	●	●	●			●		●
●		20	DT aerolite®	DT aerolite®		281		281	radial	RR	●	100	●		●			●		
●		24	DT aerolite®	DT aerolite®	293		291		2-cross	RR	●	100	●	●	●			●		●
●		20	DT aerolite®	DT aerolite®		265		265	radial	RR	●	100	●		●	●		●		
●		24	DT aero comp®	DT aero comp®	276		276		2-cross	RR	●	100	●	●	●	●		●		●
●		20	DT aerolite®	DT aerolite®		265		265	radial	RR	●	100	●		●			●		
●		24	DT aero comp®	DT aero comp®	276		276		2-cross	RR	●	100	●	●	●			●		●
●		20	DT aero comp®	DT aero comp®		275		275	radial	RR	●	110	●		●	●		●		
●		24	DT aero comp®	DT aero comp®	285		283		2-cross	RR	●	110	●	●	●	●		●		
●		20	DT aero comp®	DT aero comp®		288		288	radial	R	●	110	●		●					
●		24	DT aero comp®	DT new aero®	296		295		2-cross	R	●	110	●	●	●					
●		20	DT aero comp®	DT aero comp®		288		288	radial	R	●	110	●		●					
●		24	DT aero comp®	DT new aero®	296		295		2-cross	R	●	110	●	●	●					
●		20	DT aero comp®	DT aero comp®		279		279	radial	R	●	130	●		●					
●		24	DT aero comp®	DT new aero®	289		288		2-cross	R	●	130	●	●	●					

● = Standard

<sup>1)</sup> For Quick release

# WHEELS ROAD

SUSPENSION

WHEELS

COMPONENTS

ACCESSORIES

DT SWISS

Model		Rim										Hub																
Product name	Weight ± 5% [g]	Built-in width [mm]	Rim dimension	Rim inner width [mm]	Rim outer width [mm]	Rim height [mm]	Clincher tubeless ready	Tubular	Valve hole Presta SV ø 6.5 mm	Material		Hub axle system						Free wheel		Free wheel body				Disc mount				
										Carbon	Aluminum	5/100 mm RWS / Quick release	9/100 mm DT Swiss Thru bolt	12/100 mm RWS Road	15/100 mm Thru axle	5/130 mm RWS / Quick release	5/135 mm RWS / Quick release	10/135 mm DT Swiss Thru bolt	12/135 mm Thru axle	12/142 mm Thru axle	Bolt on 100 mm FW / 120 mm RW	DT Swiss Ratchet System	Pawl system	Shimano Road 9 / 10 and Sram Road 9 / 10	Shimano Road 11 incl. washer for 10 speed	Campagnolo 9 / 10 / 11	Sram Road XD-R	Track
<b>SPLINE® db wheels</b>																												
<b>RC 28 SPLINE® C db</b>	605	100	622 x 15	15	21	28	●	●	●	●	●	●	●	●	●	●	●	●	●	●	●	●	●	●	●	●	●	
	720	142	622 x 15	15	21	28	●	●	●	●	●	○	○	○	○	○	○	○	○	○	○	○	○	○	○	○	○	○
<b>RC 38 SPLINE® C db</b>	670	100	622 x 15	15	21	38	●	●	●	●	●	●	●	●	●	●	●	●	●	●	●	●	●	●	●	●	●	●
	785	142	622 x 15	15	21	38	●	●	●	●	●	○	○	○	○	○	○	○	○	○	○	○	○	○	○	○	○	○
<b>RC 38 SPLINE® T db</b>	605	100	633 x 21	21	21	38	●	●	●	●	●	●	●	●	●	●	●	●	●	●	●	●	●	●	●	●	●	●
	720	142	633 x 21	21	21	38	●	●	●	●	●	○	○	○	○	○	○	○	○	○	○	○	○	○	○	○	○	○
<b>R 23 SPLINE® db</b>	765	100	622 x 18	18	23	23	●	●	●	●	●	●	●	●	●	●	●	●	●	●	●	●	●	●	●	●	●	●
	890	142	622 x 18	18	23	23	●	●	●	●	●	○	○	○	○	○	○	○	○	○	○	○	○	○	○	○	○	○
<b>R 24 SPLINE® db</b>	820	100	622 x 18	18	23	23	●	●	●	●	●	●	●	●	●	●	●	●	●	●	●	●	●	●	●	●	●	●
	955	142	622 x 18	18	23	23	●	●	●	●	●	○	○	○	○	○	○	○	○	○	○	○	○	○	○	○	○	○
<b>NEW R 32 SPLINE® db</b>	795	100	622 x 18	18	22	32	●	●	●	●	●	●	●	●	●	●	●	●	●	●	●	●	●	●	●	●	●	●
	925	142	622 x 18	18	22	32	●	●	●	●	●	○	○	○	○	○	○	○	○	○	○	○	○	○	○	○	○	○
<b>Track wheels</b>																												
<b>NEW RC 55 Track C</b>	865	100	633 x 21	15	21	55	●	●	●	●	●	●	●	●	●	●	●	●	●	●	●	●	●	●	●	●	●	●
	950	120	633 x 21	15	21	55	●	●	●	●	●	●	●	●	●	●	●	●	●	●	●	●	●	●	●	●	●	●
<b>NEW RC 55 Track T</b>	780	100	633 x 21	21	21	55	●	●	●	●	●	●	●	●	●	●	●	●	●	●	●	●	●	●	●	●	●	●
	865	120	633 x 21	21	21	55	●	●	●	●	●	●	●	●	●	●	●	●	●	●	●	●	●	●	●	●	●	●

● = Standard    ○ = Convertible with included accessories    ○ = Option

Nipples		Spokes								Technical data				Accessories included						
Nipple type		No. of spokes	Spoke type		Length				Lacing	Intended use / riding styles	Axle clamping force (min./max.) 4000N / 8000N	Recommended system weight max. [kg]	RWS Ratchet wheel mounting system <sup>1)</sup>	Tubeless ready tape (front and rear)	Tubeless valve	Valve guard	Wheel bag	Centering tool	Center Lock / IS (6-bolt) adapter	Carbon brake pads (front and rear)
DT Pro Lock® aluminum	DT Pro Lock® brass		Left	Right	Left cross [mm]	Left radial [mm]	Right cross [mm]	Right radial [mm]												
●		24	DT aerolite®	DT aerolite®	303		302		2-cross	RR	●	110						●	●	
●		24	DT aero comp®	DT aerolite®	302		300		2-cross	RR	●	110		●	●			●	●	
●		24	DT aerolite®	DT aerolite®	291		293		2-cross	RR	●	110			●			●	●	
●		24	DT aero comp®	DT aerolite®	292		291		2-cross	RR	●	110		●	●			●	●	
●		24	DT aerolite®	DT aerolite®	291		293		2-cross	RR	●	110						●	●	
●		24	DT aero comp®	DT aerolite®	292		291		2-cross	RR	●	110						●	●	
●		24	DT new aero®	DT aero comp®	296		297		2-cross	R	●	110			●				●	
●		24	DT aero comp®	DT new aero®	297		296		2-cross	R	●	110		●	●				●	
●		24	DT new aero®	DT aero comp®	296		297		2-cross	R	●	110			●				●	
●		24	DT aero comp®	DT new aero®	297		296		2-cross	R	●	110		●	●				●	
●		24	DT new aero®	DT aero comp®	289		290		2-cross	RR	●	130			●				●	
●		24	DT aero comp®	DT new aero®	289		288		2-cross	RR	●	130		●	●				●	
●		20	DT aerolite®	DT aerolite®			248		radial	RR	●	100						●		
●		24	DT aerolite®	DT aerolite®	264		264		2-cross	RR	●	100						●		
●		20	DT aerolite®	DT aerolite®			248		radial	RR	●	100						●		
●		24	DT aerolite®	DT aerolite®	264		264		2-cross	RR	●	100						●		

● = Standard


<sup>1)</sup> For Quick release





# COMPONENTS

---



RIMS || HUBS || RWLS  
SPOKES || NIPPLES

# RIMS MTB

SUSPENSION

WHEELS

COMPONENTS

ACCESSORIES

DT SWISS

Model	Weight ± 5% [g]	Dimension					Rim joint				Brake		Holes				Eyelets			Technical data				Accessories included						
		Rim dimension	ERD [mm]	Rim inner width [mm]	Rim outer width [mm]	Rim height [mm]	Carbon	Welded	Sleeve joint	Pin joint	Disc brake	Rim brake	20 holes	24 holes	28 holes	32 holes	36 holes	None	Single	Double	Valve hole Presta SV ø 6.5 mm	Valve hole Schrader AV ø 8.5 mm	Tubeless ready with tape	Intended use / riding styles	Recommended system weight max. [kg]	Max. spoke tension [N]	PHR washer	DT Squorx nipple	Valve adapter Schrader AV to Presta SV	Rim tape
<b>XR / X rims</b>																														
<b>XRC 320 26</b>	325	559 x 19	540	19	26	20	●			●				●		●			●	○	XR	100	1200							
<b>XRC 320 29</b>	370	622 x 19	602	19	26	20	●			●				●		●			●	○	XR	100	1200							
<b>XR 331 26</b>	340	559 x 20	543 <sup>1)</sup>	20	24	18		●		●				●	●	●			●	○	XR	100	1200	●	●					
<b>XR 331 27.5</b>	355	584 x 20	568 <sup>1)</sup>	20	24	18		●		●				●	●	●			●	○	XR	100	1200	●	●					
<b>XR 331 29</b>	380	622 x 20	606 <sup>1)</sup>	20	24	18		●		●				●	●	●			●	○	XR	100	1200	●	●					
<b>X 392 27.5</b>	415	584 x 20	568	20	24	18			●	●				●	●			●		○	X	110	1200							
<b>X 392 29</b>	440	622 x 20	606	20	24	18			●	●				●	●			●		○	X	110	1200							
<b>XM / M rims</b>																														
<b>XMC 350 27.5</b>	370	584 x 21.5	566	21.5	28	20	●			●				●		●			●	○	XM	110	1200							
<b>XMC 350 29</b>	395	622 x 21.5	604	21.5	28	20	●			●				●		●			●	○	XM	110	1200							
<b>XM 401 26</b>	410	559 x 22.5	540 <sup>1)</sup>	22.5	27	19.5		●		●				●	●	●			●	○	XM	110	1200	●	●					
<b>XM 401 27.5</b>	430	584 x 22.5	565 <sup>1)</sup>	22.5	27	19.5		●		●				●	●	●			●	○	XM	110	1200	●	●					
<b>XM 401 29</b>	460	622 x 22.5	603 <sup>1)</sup>	22.5	27	19.5		●		●				●	●	●			●	○	XM	110	1200	●	●					
<b>NEW XM 481 27.5</b>	490	584 x 30	563 <sup>1)</sup>	30	35	21		●		●				●	●	●			●	○	XM	110	1200	●	●					
<b>NEW XM 481 29</b>	525	622 x 30	601 <sup>1)</sup>	30	35	21		●		●				●	●	●			●	○	XM	110	1200	●	●					
<b>NEW XM 551 27.5</b>	595	584 x 40	564 <sup>1)</sup>	40	44	21		●		●				●	●	●			●	○	XM	110	1200	●	●					
<b>M 442 27.5</b>	465	584 x 22.5	565	22.5	27	19.5			●	●				●	●			●		○	M	110	1200							
<b>M 442 29</b>	495	622 x 22.5	603	22.5	27	19.5			●	●				●	●			●		○	M	110	1200							

● = Standard

○ = Option

<sup>1)</sup> Incl. PHR washer



Model	Weight ± 5% [g]	Dimension					Rim joint		Brake	Holes					Eyelets		Technical data				Accessories included									
		Rim dimension	ERD [mm]	Rim inner width [mm]	Rim outer width [mm]	Rim height [mm]	Carbon	Welded	Sleeve joint	Pin joint	Disc brake	Rim brake	20 holes	24 holes	28 holes	32 holes	36 holes	None	Single	Double	Valve hole Presta SV ø 6.5 mm	Valve hole Schrader AV ø 8.5 mm	Tubeless ready with tape	Intended use / riding styles	Recommended system weight max. [kg]	Max. spoke tension [N]	PHR washer	DT Squorx nipple	Valve adapter Schrader AV to Presta SV	Rim tape
<b>EX/E rims</b>																														
<b>EX 471 26</b>	475	559 x 25	537 <sup>1)</sup>	25	30	21	●			●				●	●		●			●	○	EX	110	1200	●	●				
<b>EX 471 27.5</b>	500	584 x 25	562 <sup>1)</sup>	25	30	21	●			●				●	●		●			●	○	EX	110	1200	●	●				
<b>EX 471 29</b>	530	622 x 25	600 <sup>1)</sup>	25	30	21	●			●				●	●		●			●	○	EX	110	1200	●	●				
<b>E 512 27.5</b>	525	584 x 25	562	25	30	21		●		●				●	●			●		●	○	E	130	1200						
<b>E 512 29</b>	560	622 x 25	600	25	30	21		●		●				●	●			●		●	○	E	130	1200						
<b>533d 26</b>	520	559 x 22	539	22	27.7	20.3			●	●				●	●			●		●	○	E	130	1200						
<b>533d 27.5</b>	540	584 x 22	564	22	27.7	20.3			●	●				●	●			●		●	○	E	130	1200						
<b>533d 29</b>	575	622 x 22	602	22	27.7	20.3			●	●				●	●			●		●	○	E	130	1200						
<b>FR rims</b>																														
<b>NEW FR 570 26</b>	570	559 x 27.5	535	27.5	33	22.5	●			●				●			●			○	●	○	FR	140	1200			●		
<b>FR 570 27.5</b>	590	584 x 27.5	560	27.5	33	22.5	●			●				●			●			○	●	○	FR	140	1200			●		
<b>BR rims</b>																														
<b>NEW BR 710 26</b>	675	559 x 76	549	76	81	16	●			●				●			●					BR	130	1200					●	

● = Standard

○ = Convertible with included accessories

○ = Option

<sup>1)</sup> Incl. PHR washer

# RIMS ROAD / TREKKING / E-BIKE

Model	Weight ± 5% [g]	Dimension					Rim joint		Brake		Holes				Eyelets			Technical data				Accessories included								
		Rim dimension	ERD [mm]	Rim inner width [mm]	Rim outer width [mm]	Rim height [mm]	Carbon	Welded	Sleeve joint	Pin joint	Disc brake	Rim brake	20 holes	24 holes	28 holes	32 holes	36 holes	None	Single	Double	Valve hole Presta SV ø 6.5 mm	Valve hole Schrader AV ø 8.5 mm	Tubeless ready with tape	Intended use / riding styles	Recommended system weight max. [kg]	Max. spoke tension [N]	PHR washer	DT Squorx nipple	Valve adapter Schrader AV to Presta SV	Rim tape
<b>Road rims</b>																														
RR 440	450	622 x 16	599	16	21	21	●			●	●	●	●	●			●			●	○	RR	110	1200						
RR 440 asymmetric	450	622 x 16	599	16	21	21	●			●		●	●	●			●			●	○	RR	110	1200						
<b>NEW</b> RR 511	530	622 x 18	581 <sup>1)</sup>	18	22	32	●			●	●	●	●	●			●			●	○	RR	130	1200	●	●				
RR 585	580	622 x 15	582	15	19.5	30.3	●			●	●	●	●	●			●			●		RR	130	1200						
R 460	460	622 x 18	596	18	23	23		●		●		●	●	●			●			●	○	R	110	1200						
<b>NEW</b> R 460 db	450	622 x 18	596	18	22	23		●		●		●	●	●			●			●	○	R	110	1200						
<b>NEW</b> RR 511 db	490	622 x 18	581 <sup>1)</sup>	18	22	32	●			●		●	●	●			●			●	○	RR	130	1200	●	●				
<b>Trekking/E-bike rims</b>																														
TK 540	545	622 x 19	600	19	23.6	20.2	●			●				●	●				●	●		TK	130	1200						
TK 540 db	545	622 x 19	600	19	23.6	20.2	●			●				●					●	●		TK	130	1200						
535	530	559 x 19	540	19	25.2	20.7			●	●				●	●				●	○	●	TK/E	140	1200				●		
535 700c	600	622 x 19	603	19	25.2	20.7			●	●				●	●				●	○	●	TK/E	140	1200				●		
545 db	540	559 x 21	542	21	26.7	19			●	●				●	●				●	○	●	TK/E	140	1200				●		
545 db 700c	605	622 x 21	605	21	26.7	19			●	●				●	●				●	○	●	TK/E	140	1200				●		

● = Standard

○ = Convertible with included accessories

○ = Option

<sup>1)</sup> Incl. PHR washer

# HUBS 180 CARBON CERAMIC CLASSIC

Model		Hub axle system																Spoke holes				Disc mount		Free wheel body				Technical data									
Product name	Weight <sup>2)</sup> ± 5% [g]	Built-in width [mm]	5/100 mm RWS / Quick release	9/100mm DT Swiss Thru bolt	12/100 mm Thru axle	15/100 mm Thru axle	15/110 mm Thru axle PS <sup>1)</sup>	15/110 mm Thru axle Boost	20/110 mm Thru axle	15/150 mm Thru axle Big Ride	Lefty	5/130 mm RWS / Quick release	5/135 mm RWS / Quick release	5/145 mm RWS / Quick release	10/135 mm DT Swiss Thru bolt	12/135 mm Thru axle	12/142 mm Thru axle	12/148 mm Thru axle Boost	12/150 mm Thru axle	12/190 mm Thru axle	12/197 mm Thru axle	bolt on	20 holes	24 holes	28 holes	32 holes	36 holes	40 holes	Center Lock	IS (6-bolt)	Shimano MTB 9 / 10 / 11 and Sram MTB 9 / 10	Sram MTB XD 11	Sram Road XD-R	Shimano Road 11 incl. washer for 10 speed	Campagnolo 9 / 10 / 11	Spoke hole ø [mm]	Optimized spoke ø [mm]
<b>180 non disc</b>																																					
<b>Front</b>	100	100	●																				●	●	●											2.4	2.0
	<b>Rear</b>	183	130									●												●	●	●	●				○	○	○	●	○	2.4	2.0
190		130									●												●	●	●	●				○	○	○	○	●	2.4	2.0	
<b>180 Road db Center Lock<sup>3)</sup></b>																																					
<b>Front</b>	105	100	○	○	○	●																	●	●	●			●	○						2.5	2.0	
<b>Rear</b>	202	142									○	○	○	●										●	●	●			●	○		○	○	●	○	2.5	2.0
<b>180 Center Lock<sup>3)</sup></b>																																					
<b>Front</b>	108	100	●			○																		●	●			●	○						2.5	2.0	
	105	100	○			●																		●	●			●	○					2.5	2.0		
<b>Rear</b>	207	135									●			○	○									●	●			●	○	●	○				2.5	2.0	
	202	142									○			○	●									●	●			●	○	●	○				2.5	2.0	
	195	142									○			○	●									●	●			●	○	○	●				2.5	2.0	

<sup>1)</sup> Predictive Steering for RS-1

<sup>2)</sup> Weight without CL adapter, Quick release or Thru axle

<sup>3)</sup> Including Center Lock / IS (6-bolt) adapter

● = Standard    ○ = Convertible with included accessories    ○ = Option

SUSPENSION

WHEELS

COMPONENTS

ACCESSORIES

DT SWISS

# HUBS 240S STRAIGHTPULL

Model	Hub axle system														Spoke holes				Disc mount		Free wheel body				Technical data																
	Product name	Weight <sup>2)</sup> ± 5% [g]	Built-in width [mm]	5/100 mm RWS / Quick release	9/100mm DT Swiss Thru bolt	12/100 mm Thru axle	15/100 mm Thru axle	15/110 mm Thru axle PS <sup>1)</sup>	15/110 mm Thru axle Boost	20/110 mm Thru axle	15/150 mm Thru axle Big Ride	Lefty	5/130 mm RWS / Quick release	5/135 mm RWS / Quick release	5/145 mm RWS / Quick release	10/135 mm DT Swiss Thru bolt	12/135 mm Thru axle	12/142 mm Thru axle	12/148 mm Thru axle Boost	12/150 mm Thru axle	12/190 mm Thru axle	12/197 mm Thru axle	bolt on	20 holes	24 holes	28 holes	32 holes	36 holes	40 holes	Center Lock	IS (6-bolt)	Shimano MTB 9 / 10 / 11 and Sram MTB 9 / 10	Sram MTB XD 11	Sram Road XD-R	Shimano Road 11 incl. washer for 10 speed	Campagnolo 9 / 10 / 11	Spoke hole ø [mm]	Optimized spoke ø [mm]			
<b>240s non disc</b>																																									
Front	107	100	●																					●															2.5	2.0	
Rear	212	130										●													●														2.5	2.0	
<b>240s Road db Center Lock</b>																																									
Front	126	100	●	○	●	●																			●	●			●	○									2.5	2.0	
Rear	228	142										●	○	○	●										●	●			●	○			○	●	○					2.5	2.0
<b>240s Center Lock</b>																																									
Front fifteen	122	100	●			○																																	2.5	2.0	
	118	100	○			●																																	2.5	2.0	
Rear	231	135										●		○	○										●				●	○	●	○								2.5	2.0
	227	142										○		○	●										●				●	○	●	○								2.5	2.0
	216	142										○		○	●										●				●	○	○	●								2.5	2.0
<b>240s disc brake IS (6-bolt)</b>																																									
Front	130	100	●			○																																	2.5	2.0	
	127	100	○			●																																		2.5	2.0
Front oversize	164	110	○			○			●																			●												2.5	2.0
Front Predictive Steering <sup>1)</sup>	178	110					●																						●											2.5	2.0
Rear	237	135										●		○	○														●		●	○								2.5	2.0
	232	142										○		○	●														●		●	○								2.5	2.0
	222	142										○		○	●														●		○	●								2.5	2.0
	276	150																	●										●		●	○								2.5	2.0

● = Standard

○ = Convertible with included accessories

○ = Option

<sup>1)</sup> Predictive Steering for RS-1

<sup>2)</sup> Weight without CL adapter, Quick release or Thru axle

# HUBS 240S CLASSIC

Model	Hub axle system														Spoke holes				Disc mount		Free wheel body				Technical data															
	Product name	Weight <sup>2)</sup> ± 5% [g]	Built-in width [mm]	5/100 mm RWS / Quick release	9/100mm DT Swiss Thru bolt	12/100 mm Thru axle	15/100 mm Thru axle	15/110 mm Thru axle PS <sup>1)</sup>	15/110 mm Thru axle Boost	20/110 mm Thru axle	15/150 mm Thru axle Big Ride	Lefty	5/130 mm RWS / Quick release	5/135 mm RWS / Quick release	5/145 mm RWS / Quick release	10/135 mm DT Swiss Thru bolt	12/135 mm Thru axle	12/142 mm Thru axle	12/148 mm Thru axle Boost	12/150 mm Thru axle	12/190 mm Thru axle	12/197 mm Thru axle	bolt on	20 holes	24 holes	28 holes	32 holes	36 holes	40 holes	Center Lock	IS (6-bolt)	Shimano MTB 9 / 10 / 11 and Sram MTB 9 / 10	Sram MTB XD 11	Sram Road XD-R	Shimano Road 11 incl. washer for 10 speed	Campagnolo 9 / 10 / 11	Spoke hole ø [mm]	Optimized spoke ø [mm]		
<b>240s non disc</b>																																								
<b>Front</b>	105	100	●																					●	●	●	●											2.4	2.0	
<b>Rear</b>	209	130										●																										2.4	2.0	
	209	130										●																										2.4	2.0	
<b>240s Road db Center Lock</b>																																								
<b>Front</b>	126	100	○	○	○	●																				●	●		●	○								2.5	2.0	
<b>Rear</b>	228	142										○	○	○	●											●	●	●		●	○		○			○	○		2.5	2.0
<b>240s Center Lock</b>																																								
<b>Front fifteen</b>	130	100	●			○																						●	○									2.5	2.0	
	126	100	○			●																					●	○											2.5	2.0
<b>Rear</b>	233	135										●			○	○											●	○	●	○									2.5	2.0
	218	142										○			○	●									●	●	●		●	○	○	●							2.5	2.0
	228	142										○			○	●										●	●		●	○	○								2.5	2.0
<b>240s disc brake IS (6-bolt)</b>																																								
<b>Front</b>	145	100	●																										●									2.5	2.0	
	165	100	○			●																							●										2.5	2.0
<b>Front oversize</b>	165	110	○		○		●																					●											2.5	2.0
<b>Rear</b>	244	135										●			○	○											●	●		○									2.5	2.0
	240	142										○			○	●											●	●		○									2.5	2.0
	230	142										○			○	●											●	○	●										2.5	2.0
	275	150																									●	●		○									2.5	2.0
	265	150																									●	○	●										2.5	2.0
<b>240s Lefty</b>																																								
<b>Front<sup>3)</sup></b>	124	Lefty									●																	●										2.4	2.0	
<b>240s single speed</b>																																								
<b>Rear</b>	243	142										○			●												●	○										2.5	2.0	
	308	135																					●				●	○										2.5	2.0	

● = Standard

○ = Convertible with included accessories

○ = Option

<sup>2)</sup> Weight without CL adapter, Quick release or Thru axle

<sup>3)</sup> For Lefty 2.0 special Cannondale adapter is needed

SUSPENSION

WHEELS

COMPONENTS

ACCESSORIES

DT SWISS

# HUBS 350 STRAIGHTPULL

SUSPENSION  
WHEELS  
COMPONENTS  
ACCESSORIES  
DT SWISS

Model	Hub axle system														Spoke holes				Disc mount		Free wheel body				Technical data																																
	Product name	Weight <sup>2)</sup> ± 5% [g]	Built-in width [mm]	5/100 mm RWS / Quick release	9/100mm DT Swiss Thru bolt	12/100 mm Thru axle	15/100 mm Thru axle	15/110 mm Thru axle PS <sup>1)</sup>	15/110 mm Thru axle Boost	20/110 mm Thru axle	15/150 mm Thru axle Big Ride	Lefty	5/130 mm RWS / Quick release	5/135 mm RWS / Quick release	5/145 mm RWS / Quick release	10/135 mm DT Swiss Thru bolt	12/135 mm Thru axle	12/142 mm Thru axle	12/148 mm Thru axle Boost	12/150 mm Thru axle	12/190 mm Thru axle	12/197 mm Thru axle	bolt on	20 holes	24 holes	28 holes	32 holes	36 holes	40 holes	Center Lock	IS (6-bolt)	Shimano MTB 9 / 10 / 11 and Sram MTB 9 / 10	Sram MTB XD 11	Sram Road XD-R	Shimano Road 11 incl. washer for 10 speed	Campagnolo 9 / 10 / 11	Spoke hole ø [mm]	Optimized spoke ø [mm]																			
<b>350 non disc</b>																																																									
Front	110	100	●																																										2.5	2.0											
Rear	264	130										●																																2.5	2.0												
<b>350 Road db Center Lock</b>																																																									
Front	136	100	○	○	○	●																																											2.5	2.0							
Rear	267	142										○	○	○	●																																				2.5	2.0					
<b>350 Center Lock</b>																																																									
Front	151	100	●																																															2.5	2.0						
	130	100	○			●																																														2.5	2.0				
Rear	271	135										●				○	○																																				2.5	2.0			
	243	142										○				○	●																																					2.5	2.0		
	267	142										○				○	●																																					2.5	2.0		
<b>350 disc brake IS (6-bolt)</b>																																																									
Front	151	100	●																																																			2.5	2.0		
	137	100	○			●																																																		2.5	2.0
	239	110																																																							2.5
Rear	279	135											●				○	○																																						2.5	2.0
	274	142											○				○	●																																						2.5	2.0
	252	142											○				○	●																																						2.5	2.0

● = Standard

○ = Convertible with included accessories

○ = Option

<sup>1)</sup> Predictive Steering for RS-1

<sup>2)</sup> Weight without CL adapter, Quick release or Thru axle

# HUBS 350 CLASSIC

Model	Hub axle system														Spoke holes				Disc mount		Free wheel body				Technical data															
	Product name	Weight <sup>2)</sup> ± 5% [g]	Built-in width [mm]	5 / 100 mm RWS / Quick release	9 / 100mm DT Swiss Thru bolt	12 / 100 mm Thru axle	15 / 100 mm Thru axle	15 / 110 mm Thru axle PS <sup>1)</sup>	15 / 110 mm Thru axle Boost	20 / 110 mm Thru axle	15 / 150 mm Thru axle Big Ride	Lefty	5 / 130 mm RWS / Quick release	5 / 135 mm RWS / Quick release	5 / 145 mm RWS / Quick release	10 / 135 mm DT Swiss Thru bolt	12 / 135 mm Thru axle	12 / 142 mm Thru axle	12 / 148 mm Thru axle Boost	12 / 150 mm Thru axle	12 / 190 mm Thru axle	12 / 197 mm Thru axle	bolt on	20 holes	24 holes	28 holes	32 holes	36 holes	40 holes	Center Lock	IS (6-bolt)	Shimano MTB 9 / 10 / 11 and Sram MTB 9 / 10	Sram MTB XD 11	Sram Road XD-R	Shimano Road 11 incl. washer for 10 speed	Campagnolo 9 / 10 / 11	Spoke hole ø [mm]	Optimized spoke ø [mm]		
<b>350 non disc</b>																																								
Front	149	100	●																					●	●	●											2.6	2.0		
Rear	265	130										●													●	●	●								○	●	○	2.6	2.0	
	252	130										●														●	●							○	●	○	2.6	2.0		
<b>350 Road db Center Lock</b>																																								
Front	136	100	○	○	○	●																		●	●	●				●	○						2.6	2.0		
Rear	267	142											○	○	○	●									●	●	●				●	○		○	●	○		2.6	2.0	
<b>350 Center Lock</b>																																								
Front	156	100	●																						●	●				●	○						2.6	2.0		
	136	100	○			●																			●	●				●	○						2.6	2.0		
Rear	272	135										●			○	○									●	●				●	○	●	○					2.6	2.0	
	267	142										○			○	●									●	●				●	○	●	○					2.6	2.0	
	244	142										○			○	●									●	●				●	○	○	●					2.6	2.0	
<b>350 Boost Center Lock</b>																																								
Front	142	110						●																		●	●				●	○						2.6	2.0	
Rear	272	148																								●	●				●	○	●	○					2.6	2.0
<b>350 disc brake IS (6-bolt)</b>																																								
Front	194	100	●																							●	●				●							2.6	2.0	
	172	100	○			●																				●	●				●							2.6	2.0	
	239	110							●																	●	●				●							2.6	2.0	
Rear	305	135										●			○	○									●	●				●	●	○						2.6	2.0	
	300	142										○			○	●									●	●				●	●	○					2.6	2.0		
	277	142										○			○	●								●	●				●	○	●						2.6	2.0		
	344	150																							●	●				●	●	○					2.6	2.0		

● = Standard

○ = Convertible with included accessories

○ = Option

<sup>1)</sup> Predictive Steering for RS-1

<sup>2)</sup> Weight without CL adapter, Quick release or Thru axle

SUSPENSION

WHEELS

COMPONENTS

ACCESSORIES

DT SWISS

# HUBS 350 CLASSIC BIG RIDE / TRACK / 540 CLASSIC

Model	Hub axle system											Spoke holes				Disc mount		Free wheel body			Technical data																																									
	Product name	Weight <sup>2)</sup> ± 5% [g]	Built-in width [mm]	5 / 100 mm RWS / Quick release	9 / 100mm DT Swiss Thru bolt	12 / 100 mm Thru axle	15 / 100 mm Thru axle	15 / 110 mm Thru axle PS <sup>1)</sup>	15 / 110 mm Thru axle Boost	20 / 110 mm Thru axle	15 / 150 mm Thru axle Big Ride	Lefty	5 / 130 mm RWS / Quick release	5 / 135 mm RWS / Quick release	5 / 145 mm RWS / Quick release	10 / 135 mm DT Swiss Thru bolt	12 / 135 mm Thru axle	12 / 142 mm Thru axle	12 / 148 mm Thru axle Boost	12 / 150 mm Thru axle	12 / 190 mm Thru axle	12 / 197 mm Thru axle	bolt on	20 holes	24 holes	28 holes	32 holes	36 holes	40 holes	Center Lock	IS (6-bolt)	Shimano MTB 9 / 10 / 11 and Sram MTB 9 / 10	Sram MTB XD 11	Sram Road XD-R	Shimano Road 11 incl. washer for 10 speed	Campagnolo 9 / 10 / 11	Spoke hole ø [mm]	Optimized spoke ø [mm]																								
<b>350 Big Ride Center Lock</b>																																																														
<b>Front</b>	174	150								●																				●	○									2.6	2.0																					
<b>Rear</b>	300	190																		●	○								●	○	●	○							2.6	2.0																						
	302	197																		○	●								●	○	●	○							2.6	2.0																						
<b>350 Big Ride IS (6-bolt)</b>																																																														
<b>Front</b>	215	150								●																				●											2.6	2.0																				
<b>Rear</b>	333	190																		●	○								●	●	○									2.6	2.0																					
	335	197																		○	●								●	●	○								2.6	2.0																						
<b>Track</b>																																																														
<b>Front</b>	280	100																				●	●																		2.6	2.0																				
<b>Rear</b>	336	120																				●		●																2.6	2.0																					
<b>540 tandem</b>																																																														
<b>Front</b>	242	100	●																											●	●									2.8	2.34																					
<b>Rear</b>	477	135											●																●	●	●	●								2.8	2.34																					
	510	145												●															●	●	●	●								2.8	2.34																					

● = Standard

○ = Convertible with included accessories

○ = Option

<sup>1)</sup> Predictive Steering for RS-1

<sup>2)</sup> Weight without CL adapter, Quick release or Thru axle



Model	Weight ± 5% [g]	Hub axle system										Axle		Lever
		5/100 mm RWS / Quick release	9/100 mm DT Swiss Thru bolt	15/100 mm Thru axle	15/110 mm Thru axle PS <sup>1)</sup>	15/150 mm Thru axle	5/130 mm RWS / Quick release	5/135 mm RWS / Quick release	5/145 mm RWS / Quick release	10/135 mm DT Swiss Thru bolt	12/142 mm Thru axle	Material	Material	Material
<b>Road</b>														
RWS Road titan	45	●									●		●	
	46					●					●		●	
	47						●				●		●	
RWS Road steel	50	●										●	●	
	54					●						●	●	
	55						●					●	●	
<b>MTB</b>														
RWS MTB titan	44	●									●		●	
	47						●				●		●	
RWS MTB steel	50	●										●	●	
	54					●						●	●	
	55						●					●	●	
RWS Thru bolt	58	●										●	●	
	70								●			●	●	
RWS Thru axle	64								●			●	●	
RWS E-Thru	71									●		●	●	
RWS for X-12	65									●		●	●	
RWS 15 mm Thru axle	72		●									●	●	
	78				●							●	●	
RWS 15 mm Thru axle PS <sup>1)</sup>	74			●								●	●	

● = Standard

<sup>1)</sup> Predictive Steering for RS-1

# SPOKES COLLECTION

SUSPENSION

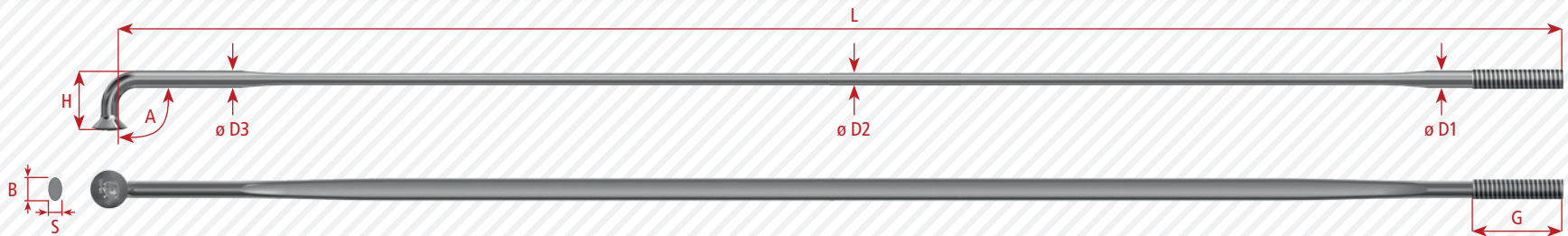
WHEELS

COMPONENTS

ACCESSORIES

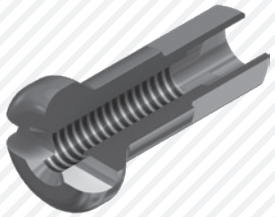
DT SWISS

Model	Product name	Weight ± 5% for 64 spokes, length 264 mm [g]	Thread (DIN 79012)				Length Range [mm] (L)	Shape			Head Height of head [mm] (H)	Diameters			Bladed		Angle 90-95° (A)	Gauges Diameters	Color				E-bike use
			1.8 mm   FG 2.0	2.0 mm   FG 2.3	2.34 mm   FG 2.6	Length of thread 9 – 10 mm (G)		Range [mm] (L)	Double butted	Triple butted		Bladed	Diameter 1 [mm] (D1)	Diameter 2 [mm] (D2)	Diameter 3 [mm] (D3)	Width [mm] (B)			Thickness [mm] (S)	Silver	Black	White	
DT champion®		359	●		●	140 – 315				6	1.8	1.8	1.8			●	15	●					
DT champion®		444		●	●	140 – 315				6.2	2	2	2			●	14	●	●				
DT champion®		591			●	140 – 315				7.8	2.34	2.34	2.34			●	13	●				●	
DT champion® straightpull		440		●	●	140 – 315					2	2	2				14	●	●				
DT competition®		311	●		●	238 – 300	●			6	1.8	1.6	1.8			●	15   16   15	●					
DT competition®		382		●	●	238 – 300	●			6.2	2	1.8	2			●	14   15   14	●	●	●	●		
DT competition® straightpull		378		●	●	238 – 300	●				2	1.8	2				14   15   14	●	●				
DT competition® race		312		●	●	238 – 300	●			6.2	2	1.6	2			●	14   16   14	●	●				
DT competition® race straightpull		308		●	●	238 – 300	●				2	1.6	2				14   16   14	●	●				
DT super comp®		318	●		●	247 – 308		●		6.2	1.8	1.7	2			●		●	●				
DT revolution®		283		●	●	247 – 308	●			6.2	2	1.5	2			●	14   17   14	●	●				
DT alpine®		586		●	●	260 – 305	●			7.8	2	2.34	2.34			●	14   13	●	●			●	
DT alpine III®		418		●	●	260 – 305		●		7.8	2	1.8	2.34			●	14   15   13	●	●			●	
DT aerolite®		278		●	●	238 – 300	●	●		6.2	2		2	2.3	0.9	●		●	●	●	●		
DT aerolite® straightpull		274		●	●	238 – 300	●	●			2		2	2.3	0.9			●	●				
DT aero speed®		355	●		●	215 – 305		●		6	1.8		1.8	2.3	1.2	●		●	●				
DT new aero®		437		●	●	215 – 305		●		6.2	2		2	3.3	1.1	●		●	●				
DT aero comp®		380		●	●	238 – 300	●	●		6.2	2		2	2.3	1.2	●		●	●				
DT aero comp® straightpull		376		●	●	238 – 300	●	●			2		2	2.3	1.2			●	●				

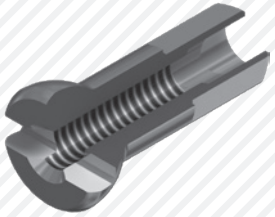


● = Standard

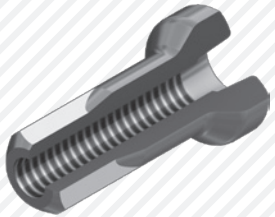
# NIPPLES COLLECTION



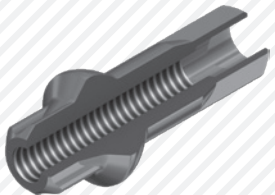
DT (Pro Lock®) standard aluminum  
DT (Pro Lock®) standard brass



DT (Pro Lock®) Pro Head® brass



DT (Pro Lock®) hidden aluminum



DT (Pro Lock®) Squorx Pro Head® aluminum  
DT (Pro Lock®) Squorx Pro Head® brass

Model	Thread (DIN 79012)	Length	Thread coating		Color							E-bike								
			DT Swiss Pro Lock®	Without DT Swiss Pro Lock®	Silver	Black	Gold	Green	Blue	Turquoise	Violet		Red							
Product name	Weight ± 5% for 64 nipples [g]	1.8 mm   FG 2.0	2.0 mm   FG 2.3	2.34 mm   FG 2.6	12 mm	14 mm	14.5 mm	15 mm	16 mm	DT Swiss Pro Lock®	Without DT Swiss Pro Lock®	Silver	Black	Gold	Green	Blue	Turquoise	Violet	Red	E-bike use
DT standard brass DT Pro Lock® standard brass	64	●			●					●	●	●	●							
	73	●				●				●	●	●	●							
	84	●							●	●	●	●	●							
	62		●		●					●	●	●	●							●
	71		●			●				●	●	●	●							●
	82		●						●	●	●	●	●							●
	56			●	●						●	●	●							●
DT standard aluminum DT Pro Lock® standard aluminum	112			●		●				●	●	●								●
	21	●			●					●	●	●	●	●*	●*	●*	●*	●*	●*	
	24	●				●				●	●	●	●							
	27	●							●	●	●	●	●							
	20		●		●					●	●	●	●	●*	●*	●*	●*	●*	●*	
	23		●			●				●	●	●	●							
	26		●						●	●	●	●	●							
DT Pro Head® brass DT Pro Lock® Pro Head® brass	61	●			●					●	●	●	●							
	70	●				●				●	●	●	●							
	59		●		●					●	●	●	●							●
	68		●			●				●	●	●	●							●
	74			●	●					●	●	●	●							●
DT hidden aluminum DT Pro Lock® hidden aluminum	22		●		●					●	●	●								
	DT Squorx Pro Head® aluminum DT Pro Lock® Squorx Pro Head® aluminum	27	●						●	●	●	●								
DT Squorx Pro Head® brass DT Pro Lock® Squorx Pro Head® brass	26		●						●	●	●	●							●	
	79		●						●	●	●	●								●

● = Standard

\* Only without DT Pro Lock®

SUSPENSION

WHEELS

COMPONENTS

ACCESSORIES

DT SWISS





ACCESSORIES



---



Product name	Model	Art. No.	Included		Convertible wheels														Convertible hubs									
			Rotor and end cap right	Rotor and end cap left and right	RRC 65 DICUT® C/T	RR 21 DICUT®	RR 21 DICUT® db	R 20 DICUT®	RC 28 SPLINE® C Mon Chasseral	RC 28 SPLINE® C	RC 28 SPLINE® C db	RC 38 SPLINE® C/T	RC 38 SPLINE® C/T db	RC 46 SPLINE® H	RC 55 SPLINE® C/T	R 23 SPLINE®	R 23 SPLINE® db	R 24 SPLINE®	R 24 SPLINE® db	R 32 SPLINE®	R 32 SPLINE® db	180 / 240 / 350 Road non disc	180 Road db Center Lock	240s straightpull Road db Center Lock	240s Road db Center Lock	350 straightpull Road db Center Lock	350 Road db Center Lock	
<b>Convert into 5 mm Quick release rear</b>																												
5/130 mm ratchet for Shimano 11 speed		HWYABX00S2775S	●		●	●			●	●	●	●	●	●								●						
5/130 mm ratchet for Shimano 11 speed SL		HWYABX00S3184S	●		○	○			○	○	○	○	○	○								○						
5/130 mm ratchet for Campagnolo		HWYABX00S1296S	●		○	○			○	○	○	○	○	○								○						
5/130 mm 3 pawl for Shimano 11 speed		HWYABM00S6151S	●					●							●		●		●									
5/130 mm 3 pawl for Campagnolo		HWYABM00S6234S	●				○								○		○		○									
5/135 mm ratchet for Shimano 11 speed		HWYABX00S2775S	●																			○		○		○		
5/135 mm ratchet for Shimano 11 speed		HWRABX00S2775S + HWGXXX0006383S		●			○				○	○											○		○		○	
5/135 mm 3 pawl for Shimano 11 speed		HWYABM00S6151S	●													○		○		○								
<b>Convert into 10 mm Thru bolt rear</b>																												
10/135 mm ratchet for Shimano 11 speed		HWRABX00S2775S + HWGXXX0004634S		●																			○		○		○	
10/135 mm ratchet for Shimano 11 speed		HWRABX00S2775S + HWGXXX0006560S		●			○				○	○												○		○		○
10/135 mm 3 pawl for Shimano 11 speed		HWRABM00S4188S + HWGXXX0006560S	●														○		○		○							
<b>Convert into 12 mm Thru axle rear</b>																												
12/135 mm ratchet for Shimano 11 speed		HWRABX00S2775S + HWGXXX0003910S		●																			○		○		○	
12/135 mm ratchet for Shimano 11 speed		HWRABX00S2775S + HWGXXX0007569S		●			○				○	○												○		○		○
12/135 mm 3 pawl for Shimano 11 speed		HWRABM00S4188S + HWGXXX0007569S	●														○		○		○							
12/142 mm ratchet for Shimano 11 speed		HWRABX00S2775S + HWGXXX0003525S		●																			○		○		○	
12/142 mm ratchet for Shimano 11 speed		HWRABX00S2775S + HWGXXX0006333S		●			○				○	○												○		○		○
12/142 mm 3 pawl for Shimano 11 speed		HWYABM00S6152S	●														●		●		●							

# TUBELESS SOLUTION MTB

SUSPENSION

WHEELS

COMPONENTS

ACCESSORIES

DT SWISS

Model		Included	Wheels													Rims													
Product name	Art. No.	Tubeless ready tape	Tubeless valve	XRC 1200 SPLINE®	XR 1501 SPLINE® ONE	X 1700 SPLINE® TWO	X 1900 SPLINE®	XMC 1200 SPLINE®	XM 1501 SPLINE® ONE	M 1700 SPLINE® TWO	M 1900 SPLINE®	EX 1501 SPLINE® ONE	E 1700 SPLINE® TWO	E 1900 SPLINE®	FR 1950 CLASSIC	XRC 320	XR 331	X 392	XMC 350	XM 401	XM 481	XM 551	M 442	EX 471	E 512	533d	FR 570		
<b>DT Swiss tubeless ready tape</b>																													
19 mm / 10 m	TVX1910S29811S	●																											
21 mm / 10 m	TVX2110S29808S	●																											
23 mm / 10 m	TVX2310S29812S	●			●	●	●									○	○	○											
25 mm / 10 m	TVX2510S29809S	●		●				●	●	●	●								○	○			○						
27 mm / 10 m	TVX2710S29813S	●										●	●	●										○	○	○			
29 mm / 10 m	TVX2910S29810S	●													●													○	
32 mm / 10 m	TVX3210S29846S	●																		○									
42 mm / 10 m	TVX4210S29847S	●																				○							
<b>DT Swiss tubeless valve MTB</b>																													
32 mm	TVXXXXXNVALVMS		●	●	●	●	●		●	●	●	●	●	●	●	○	○	○	○	○	○	○	○	○	○	○	○	○	○
40 mm	TVXXXXXS29832S		●					●																					
<b>DT Swiss tubeless ready kits MTB</b>																													
23 mm / 10 m	32 mm valve	TVK2310S29812S	●	●	●	●	●									○	○	○											
25 mm / 10 m	32 mm valve	TVK2510S29809S	●	●	●			●	●	●									○	○			○						
25 mm / 10 m	40 mm valve	TVK2510429845S	●	●				●																					
27 mm / 10 m	32 mm valve	TVK2710S29813S	●	●								●	●	●										○	○	○			
29 mm / 10 m	32 mm valve	TVK2910S29810S	●	●											●													○	
32 mm / 10 m	32 mm valve	TVK3210S29848S	●	●																○									
42 mm / 10 m	32 mm valve	TVK4210S29849S	●	●																		○							

● = Standard    ● = Convertible with included accessories    ○ = Option



Model		Included	Wheels										Rims				
Product name	Art. No.	Tubeless ready tape	Tubeless valve	RRC 65 DICUT® C	RR 21 DICUT® / db	R 20 DICUT®	RC 28 SPLINE® C	RC 38 SPLINE® C	RC 55 SPLINE® C	RC 46 SPLINE® H	R 23 / 24 SPLINE® / db	R 32 SPLINE® / db	RR 440 (symmetric)	RR 440 (asymmetric)	RR 511 (symmetric)	RR 511 (asymmetric)	R 460 non disc / disc brake
<b>DT Swiss tubeless ready tape</b>																	
<b>19 mm / 10 m</b>	TVX1910S29811S	●					○	○	○								
<b>21 mm / 10 m</b>	TVX2110S29808S	●		○	○	○				○	○	○	○	○	○	○	○
<b>DT Swiss tubeless valve Road</b>																	
<b>32 mm</b>	TVXXXXXS09710S		●	○	○					○		○	○				○
<b>40 mm</b>	TVXXXXXS29832S		●				○				○			○	○		
<b>53 mm</b>	TVXXXXXS29833S		●					○									
<b>63 mm</b>	TVXXXXXS29834S		●						○	○							
<b>73 mm</b>	TVXXXXXS29835S		●	○													
<b>DT Swiss tubeless ready kits Road</b>																	
<b>19 mm / 10 m</b>	<b>32 mm valve</b>	TVK1910S29811S	●	●													
<b>19 mm / 10 m</b>	<b>40 mm valve</b>	TVK1910429853S	●	●			○										
<b>19 mm / 10 m</b>	<b>53 mm valve</b>	TVK1910S29854S	●	●				○									
<b>19 mm / 10 m</b>	<b>63 mm valve</b>	TVK1910629855S	●	●					○	○							
<b>21 mm / 10 m</b>	<b>32 mm valve</b>	TVK2110S29808S	●	●	○	○					○	○	○				○
<b>21 mm / 10 m</b>	<b>40 mm valve</b>	TVK2110S29941S	●	●								○		○	○		
<b>21 mm / 10 m</b>	<b>73 mm valve</b>	TVK2110729844S	●	●	○												

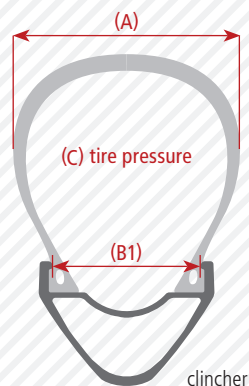
● = Standard

○ = Convertible with included accessories

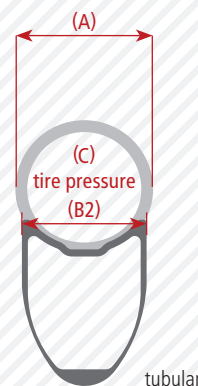
○ = Option

# DT SWISS TIRE PRESSURE / TIRE DIMENSION

Tire width (A)																															
[mm]	20	23	25	28	30	32	35	37	40	42	44	47	50	52	54	57	60	62	65	68	71	74	76	81	89	102	107	114	122	127	
[inch]	0.80	0.90	1.00	1.10	1.20	1.25	1.35	1.40	1.50	1.60	1.70	1.85	1.95	2.05	2.10	2.20	2.35	2.50	2.60	2.70	2.80	2.90	3.00	3.20	3.50	4.00	4.20	4.50	4.80	5.00	
Max. tire pressure (C)*																															
[bar]	9.5	9.0	8.5	7.8	7.2	6.8	6.0	5.7	5.5	5.2	5.0	4.7	4.4	4.1	3.8	3.5	3.2	2.9	2.7	2.5	2.3	2.1	2.0	2.0	2.0	2.0	2.0	2.0	2.0	2.0	
[psi]	138	131	123	113	104	99	87	83	80	75	73	68	64	59	55	51	46	42	39	36	33	30	29	29	29	29	29	29	29	29	
Rim inner width clincher (B1)																															
15 – 17.9 mm	●	●	●	●	●	●	●																								
18 – 19.9 mm		●	●	●	●	●	●	●	●	●	●	●	●	●	●	●															
20 – 22.4 mm				●	●	●	●	●	●	●	●	●	●	●	●	●	●	●													
22.5 – 24.4 mm							●	●	●	●	●	●	●	●	●	●	●	●	●	●											
24.5 – 27.5 mm									●	●	●	●	●	●	●	●	●	●	●	●	●	●	●	●	●	●	●	●	●	●	●
27.6 – 39.4 mm												●	●	●	●	●	●	●	●	●	●	●	●	●	●	●	●	●	●	●	●
39.5 – 50 mm																	●	●	●	●	●	●	●	●	●	●	●	●	●	●	●
50.1 – 80 mm																									●	●	●	●	●	●	●
Rim outer width tubular (B2)																															
21 mm	●	●	●	●																											
25 mm	●	●	●	●	●	●	●																								
26 mm	●	●	●	●	●	●	●	●	●	●	●	●	●	●	●	●															



clincher



tubular

- (A) See technical information on tires.  
For example: Road: 622 x **23** // MTB: 29 x **2.35**
- (B) Refer to technical information on DT Swiss rims.  
For example: 622 x **20**
- (C) For conventional tire systems (tube type, tubeless ready and tubeless).  
The tire pressure must stay within the tire manufacturer's specified pressure and may never exceed the max. tire pressure specified by DT Swiss.

## DT truing stand

The DT Swiss truing stand is the ultimate stand used by professionals. It is made of precision machined, polished and anodized aluminum with hardened steel guides and mounts.

- High-end quality and easy handling
- Quicker wheel building
- Compatible with all current bicycle wheels (12" – 29") with Quick release or Thru axle. Except Big Ride
- Three high-precision multilink arms providing a wide range of contact points
- Playfree high-precision gauges to measure lateral and vertical dish
- Extremely stiff and solid clamping
- Wheel can be trued with tires
- Can be installed on a table or clamped into a vice
- Upgrades: Analog gauges including measuring insert with ball, special measuring inserts with rounded washers or ball bearing steel roll, truing adapters for all axle configurations.

## DT tensio (analog)

The analog tensiometer is a high-precision tool to measure spoke tensions. Developed by DT Swiss and 100 % Swiss made, it is used to precisely measure the spoke tension step by step during the wheel building process. The DT Swiss tensiometer is a necessity for any professional wheel builder. It can be used with all spoke types including flat spokes. Includes case.

## DT tensio (digital)

The digital tensiometer is equipped with a digital gauge, allowing fast and easy reading of measurements. Using its Opto-RS232 data output device, the measured values can be transmitted directly to a PC or printer via a connecting cable. Suitable for all spoke types, including flat spokes. Includes case. 100 % Swiss made.

## DT Swiss nipple wrenches

The matching nipple wrench for DT Swiss nipples with an internal drive. Available for DT Swiss nipples with hexagonal (blue handle), torx (black handle) or square (red handle) heads.

- Less hand force needed
- Facilitates work with bladed spokes
- Also suitable for high profile rims (max. 100 mm)
- Developed by DT Swiss.

## Spokey

Professional tool for a precise fit onto the nipple.

## DT Swiss aero spoke holder

These spoke holders effectively eliminate spoke twists when truing or building wheels with bladed spokes (e.g. DT aerolite®). Thanks to their design, the spoke can be held closely to the nipple, which eliminates twisting. Compatible with all DT Swiss nipple wrenches.

## Spoke head punch

Punch with concave head, fitting onto DT Swiss spoke heads. Improves seating of spoke heads in hub flanges.

## Spoke ruler

For measuring spoke lengths and diameters.

## Brake pads

Brakepads for DT Swiss carbon rims. Swisstop Black Prince: New pad compound offering linear and controlled braking.

For more information please visit [www.dtswiss.com](http://www.dtswiss.com)

# DT SWISS GLOSSARY

**ABS (Auto Balancing Spring)** High-performance air spring system. Both the positive and negative air chamber are set up to the rider's weight via a single valve.

**Bladed** These spokes have a flat bladed central section for improved aerodynamics. As with our butted spokes, cold forging is used to produce the aero section and to optimize mechanical properties.

**Bolt on** The bolt on system firmly connects the wheel to the dropouts with two bolts. It is mainly found on BMX and single speed frames using horizontal dropouts, e.g. track bikes.

**Carbon** Carbon parts can be dimensioned to resist the exact forces they are subjected to. This enables engineers to design parts with an unmatched strength to weight ratio.

**Center Lock** Brake rotor mounting system licensed by Shimano Inc.

**Ceramic cartridge bearings** These bearings use stainless steel races and ceramic balls. Due to their hardness they feature super low rolling resistance, low weight and are extremely long lasting.

**Double butted** These spokes feature a cold forged, thinned middle part giving the spoke a better strength to weight performance and improved elasticity.

**IS (6-bolt)** International rotor mounting standard using 6 bolts.

**Lefty** Lefty forks use a proprietary axle system whereby the wheel is bolted directly to the fork axle through an Allen bolt.

**NCS (Negative Coil Spring)** NCS is a high performance air spring system featuring a negative coil spring. It is designed to achieve a perfect spring rate, and therefore performance, irrespective of the rider's weight.

**No tool** No special tools needed for routine maintenance.

**O.D.L (Open – Drive – Lock)** O.D.L allows you to adapt your setup to any terrain. Fully open, stiffened or fully

locked it offers maximum performance in any riding situation.

**O.L (Open – Lock)** O.L damping lets you choose between two riding modes: The super smooth Open Mode for rough trails or the Lockout Mode for paved surfaces and sprinting. Simple and reliable.

**One Piece Mag** DT Swiss employs advanced engineering processes and a magnesium injection molding process to achieve an ideal strength to weight ratio on these One Piece Mag lowers.

**Pawl system** A proven free wheel system with pawls, reliable and safe.

**Pin joint** Two steel inserts are press fitted into both ends of the profile. The achieved pin joint connection is precise, strong and economic.

**Pro Lock®** A patented liquid injected into the nipple thread allows for extremely durable wheel builds.

**Quick release** A wheel mounting system developed by Tullio Campagnolo in 1922. Originally designed for Road bicycles, it became very popular for Road and mountain bikes.

**Ratchet System** The patented, high-precision Ratchet System features extremely high load capacity and reliability. The no tool concept allows for an easy execution of routine maintenance.

**Remote control** The remote control allows the manipulation of the suspension from the handlebar.

**RWS** Patented wheel mounting system. Stiffer, safer and more user friendly than conventional Quick releases. 100% disc brake compatible.

**SAB (Smooth Auto Balancing)** The SAB system simply consists of a strategically placed groove in the air chamber. It greatly improves small bump sensitivity, is super light and very low maintenance.

**Sleeved** A precise sleeve connects the profile. This guarantees optimal resistance against all occurring loads. The sleeve joint connection is the best alternative to welded rims.

**Straight pull** Straight pull spokes have no spoke elbow, which eliminates the biggest weak point of conventional spokes. They are still true- and replaceable with conventional tools.

**Thru axle front** The Thru axle connection is not compatible with the Quick release standard. Thru axles are always an integrated part of the fork. The diameter of the axle is generally 15 or 20 mm.

**Thru axle rear** The 12 mm system is as stiff as a normal Thru axle but at the same time as user friendly and lightweight as a conventional Quick release.

**Thru bolt** By using 9 and 10 mm strong axles the DT Swiss Thru bolt system significantly increases stiffness and safety while being 100% compatible with standard dropouts.

**Triple butted** Achieved by using a cold forging process, triple butted spokes feature three different diameters to adapt even further to the occurring loads.

**Tubeless** A closed rim bed allows the installation of standard tubeless tires.

**Tubeless compatible** Tubeless compatible rims can be converted to a tubeless use with the help of a tubeless kit.

**Tubeless ready** Tubeless ready rims are designed for use with tubeless kits and tubeless (ready) tires. Tubeless ready rims make for simple and quick tubeless setups.

**Tubular** Tubular tires are every racer's dream. Glued to tubular specific rims they are super light, offer a lot of grip and feature extremely low rolling resistance.

**Wear Control®** The DT Swiss Wear Control® shows the extent of rim wear. It is compliant to the European standard.

**Welded** Welding creates the most precise, lightweight and strongest rim connection possible. The seam is perfectly smoothed to guarantee a perfect tire fit and brake performance.

## XR Cross Race

Cross Country riders demand maximum performance from their bodies and the bike parts that take them through the countryside they enjoy. Just like constant training leads to improved results, DT Swiss is constantly improving the XR product line to make it lighter, stiffer and faster.

## X Cross

Cross Country stands for physical effort, enjoying nature and discovering new places. All the parts in the X category come with DT Swiss core technologies so the rider can focus on the main thing: mountainbiking and exploring.

## XM Cross Mountain

XM components are designed for the rider who wants to do it all. Whether it's riding across the Alps, the weekend group ride or competing in a bike marathon: To a Cross Mountain rider product versatility and reliability are as important as weight and comfort.

## M Mountain

Mountainbiking with its original values in mind: friends, nature and fun. The M series products leave the rider with virtually no limits: pedal up and hammer the descents. Proven technology and solid engineering are the backbone of these components.

## EX Enduro Cross

For Enduro riders it's all about adventure. They suffer through long uphill to reach that ultimate, untouched singletrack, loaded with roots, rocks and flowing corners. A day in the local bike park? No problem, EX parts are strong, reliable and lightweight to do the job perfectly.

## E Enduro

The equipment of all mountain riders must not set them any limits. When the trail points downwards, they push the boundaries but still want to ride up comfortably. E category components easily stand up to these demands with proven materials and all the key DT Swiss technologies.

## FR Freeride

Freeriding is about interpreting your surroundings. For free riders big rocks, fallen trees and creeks become drops, skinnies and gaps. FR products have to be tough and reliable to handle misjudged landings and emergency ejections mid-air.

## BR Big Ride

Big Ride means big tires on wide rims and equally big rides on and off the trail. The high volume tires shine wherever the terrain is rough and loose, whether the grade points up or down. Products from the BR category are designed with DT Swiss' cumulated engineering know-how resulting in wheels and components almost as light as conventional parts. With these attributes Big Ride components turn fat tired bikes into ultimate fun machines.

## RR Road Race

The RR product range meets Road riders' need for speed with lightweight parts featuring great stiffness, aerodynamics and reliability.

## R Road

Fly over the tarmac, find the rhythm, enjoy landscapes. R category components feature the main DT Swiss technologies and are designed with the warrants of Road riding enjoyment in mind: reliability, lightweight and durability.

## TK/E-bike Trekking/Touring

The bicycle can serve for touring, commuting or simply for a quiet ride through the countryside. Equally at home on E-bikes, touring bikes, or commuters the DT Swiss TK/E-bike components ensure reliable wheels thanks to their proven technology and materials.

# DT SWISS IMPRESSUM

---

**Publisher** DT Swiss AG  
Längfeldweg 101  
CH - 2504 Biel/Bienne

---

**Design & Layout** Miriam Ledermann

---

**Photos** Fred Leiser

---

© by DT SWISS AG | 2015

---

Printed by KOPRINT AG

---

Subject to technical alterations. Errors and misprints excepted.  
All rights reserved.

---

A big thanks to all those, who supported the making of this techbook!

---

DT Swiss products are protected by one or more of the following patents:

---

**Wheels & Components** US 6588564, US 6557684, US 7562755,  
US 7658452, US 5676227, US 6955509,  
US 7179026, US 7603776, US 8070235,  
US 6557946, US 7926884, US 8113529,  
US 8113593, US 7087128, US 8186768,  
US 8696213, US 8783790, US 9010875,  
US 8967732

---

**Suspension** US 7000907, US 6938887, US 7299908,  
US 7806390, US 8944422, US 8104782,  
US 8029010, US 8181979, US 8196947,  
US 8453806, US 8485324, US 8561764,  
US 8800730, US 8886403, US 8910963,  
US 8939459, US 8960385, US 8967343

---

International equivalents, other patents pending

---

## Headquarters

---

### Switzerland

DT Swiss AG  
Längfeldweg 101  
CH - 2504 Biel/Bienne

[info.ch@dtswiss.com](mailto:info.ch@dtswiss.com)

---

## Subsidiaries

---

### Asia

DT Swiss (Asia) Ltd.  
No. 26, 21st Road, Industr. Park  
TW - 408 Taichung-City

[info.tw@dtswiss.com](mailto:info.tw@dtswiss.com)

---

### France

DT Swiss (France) S.A.S.  
Route de Gourdon  
FR - 06620 Le Bar sur Loup

[info.fr@dtswiss.com](mailto:info.fr@dtswiss.com)

---

### Germany

DT Swiss Deutschland GmbH  
Pixeler Strasse 56  
DE - 33378 Rheda – Wiedenbrück

[info.de@dtswiss.com](mailto:info.de@dtswiss.com)

---

### Poland

DT Swiss Polska Sp. z o.o.  
ul. Towarowa 36  
PL - 64-600 Oborniki

[info.pl@dtswiss.com](mailto:info.pl@dtswiss.com)

---

### USA

DT Swiss, Inc.  
2493 Industrial Blvd.  
US - 81505 Grand Junction/CO

[info.us@dtswiss.com](mailto:info.us@dtswiss.com)

---

